

ALLEGAN COUNTY ROAD COMMISSION

47TH STREET RECONSTRUCTION PROJECT

146TH AVENUE NORTH 0.14 MILES

OVERISEL TOWNSHIP

UTILITY CONTACTS

ELECTRIC
 CONSUMERS ENERGY
 4000 CLAY AVE. SW
 GRAND RAPIDS, MI 49548
 317-445-8814
 COLE ROCHOWIAK
 HAMHSTCIVIMP@cmsenergy.com

GAS TRANSMISSION
 SEMCO ENERGY
 712 BLACK RIVER DR
 HOLLAND, MI 49424
 616-392-8000
 MATT WERENGA
 matthew.wierenga@semcoenergy.com

TELEPHONE
 FRONTIER COMMUNICATIONS
 269-370-4040
 LANCE WEBLEY
 lance.webley@fr.com

MISS DIG 811

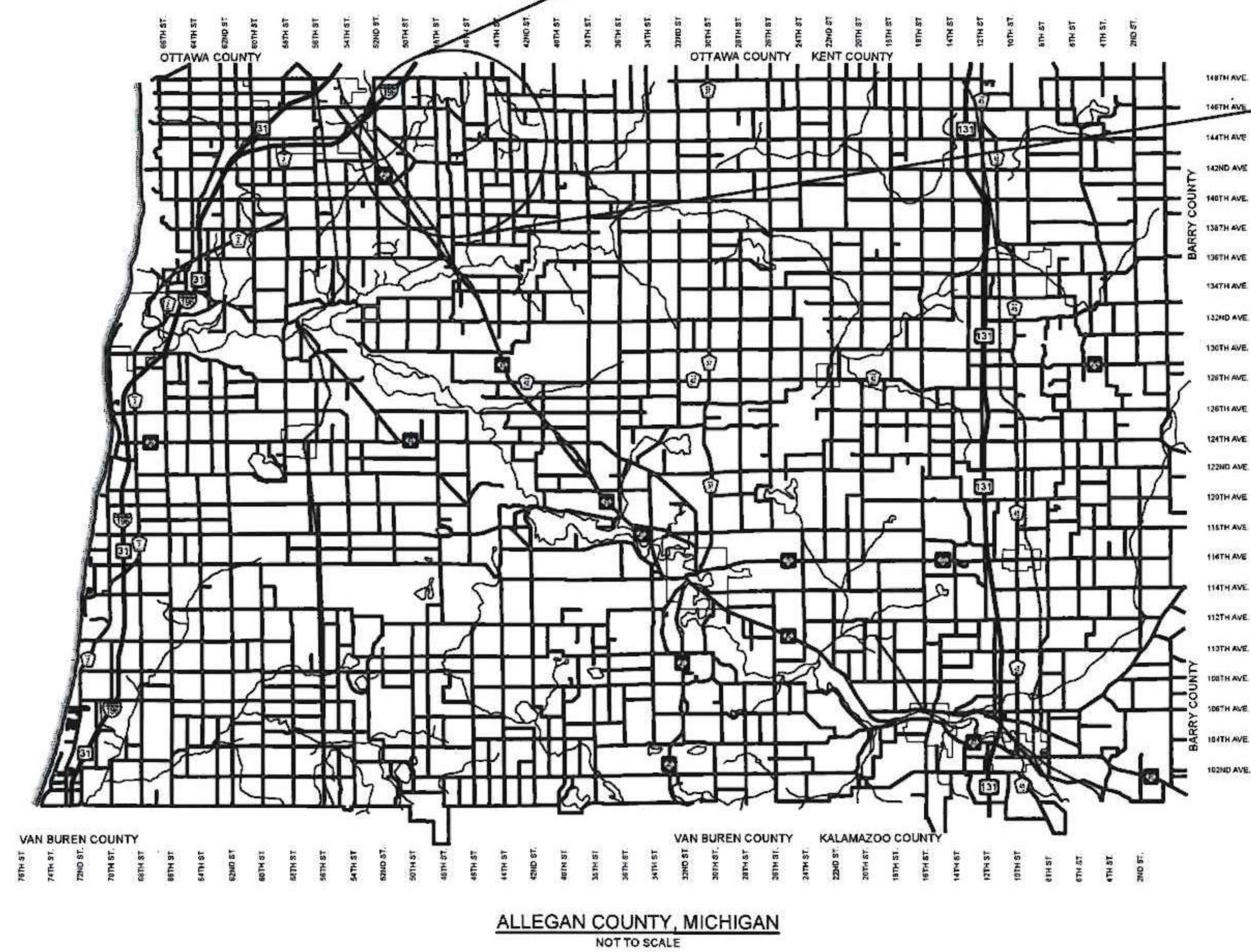
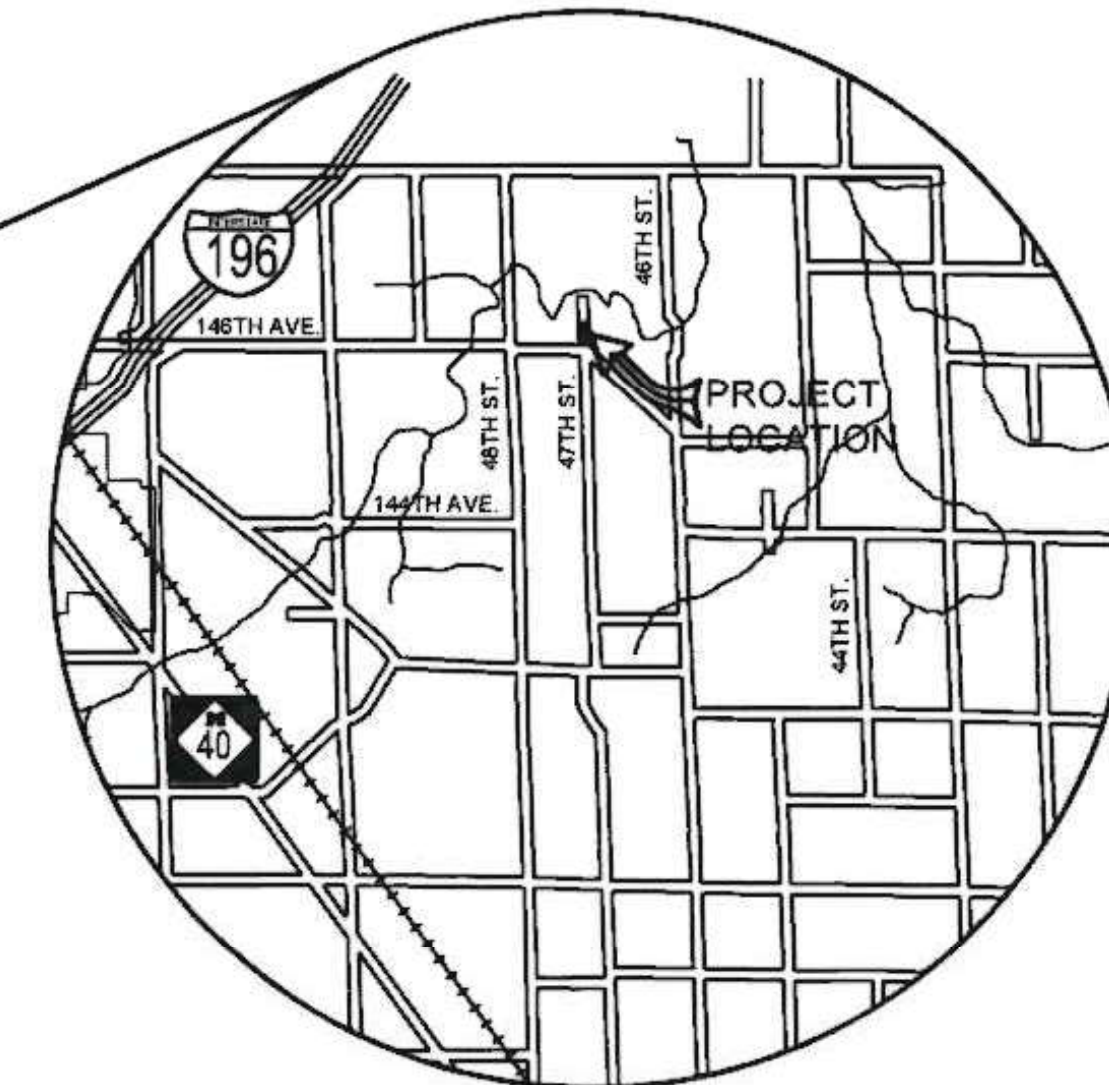
**Board of County Road Commissioners
 Of Allegan County**
 1308 LINCOLN ROAD
 ALLEGAN, MICHIGAN 49010-9762
 TELEPHONE (269) 673-2184 www.alleganroads.org FAX (269) 673-5922

EXCEPT WHERE OTHERWISE INDICATED ON THESE PLANS OR IN THE PROPOSAL AND SUPPLEMENTAL SPECIFICATIONS CONTAINED THEREIN, ALL MATERIALS AND WORKMANSHIP SHALL BE IN ACCORDANCE WITH THE 2020 MICHIGAN DEPARTMENT OF TRANSPORTATION STANDARD SPECIFICATIONS FOR CONSTRUCTION.

THE PLACING OF PAVEMENT MARKINGS AND TRAFFIC CONTROL SIGNS SHALL BE DONE IN ACCORDANCE WITH THE 2011 MICHIGAN MANUAL OF UNIFORM TRAFFIC CONTROL DEVICES AS AMENDED.

THE IMPROVEMENTS COVERED BY THESE PLANS ARE IN ACCORDANCE WITH THE AMERICAN ASSOCIATION OF STATE HIGHWAY AND TRANSPORTATION OFFICIALS, 2011 EDITION; A POLICY ON GEOMETRIC DESIGN OF HIGHWAYS AND STREETS.

THE CONTRACTOR SHALL DIAL MISS DIG @ 811 FOR PROTECTION OF UNDER GROUND UTILITIES AND IN CONFORMANCE WITH PUBLIC ACT 174 OF 2013 A MINIMUM OF THREE FULL WORKING DAYS, EXCLUDING SATURDAYS, SUNDAYS AND HOLIDAYS PRIOR TO BEGINNING EACH EXCAVATION IN AREAS WHERE PUBLIC UTILITIES HAVE NOT BEEN PREVIOUSLY LOCATED. MEMBERS WILL THUS BE ROUTINELY NOTIFIED. THIS DOES NOT RELIEVE THE CONTRACTOR OF THE RESPONSIBILITY OF NOTIFYING UTILITY OWNERS WHO MAY NOT BE A PART OF THE "MISS DIG" ALERT SYSTEM.



INDEX OF PLANS

- 1 - COVER SHEET
- 2 - TYPICAL SECTIONS, DETAILS, & NOTES
- 3 - PLAN AND PROFILE - STA. P.O.B. TO P.O.E.
- 4-5 - CROSS SECTIONS
- 6 - SOIL EROSION AND SEDIMENTATION CONTROL PLAN

REVISIONS	
1	
2	
3	
4	
5	
6	
7	

CONTRACT FOR ROAD IMPROVEMENTS
 0.14 MILES OF ROADWAY RECONSTRUCTION INCLUDING CLEARING, GRADE ESTABLISHMENT, SAND SUBBASE, AGGREGATE BASE, CULVERT REPLACEMENTS, AND RESTORATION ON 47TH STREET FROM 146TH AVENUE NORTH 0.14 MILES IN OVERISEL TOWNSHIP, ALLEGAN COUNTY.

PREPARED UNDER THE SUPERVISION OF:

ADDISON CARTER
 WOLF
 ENGINEER
 No.
 6201310174

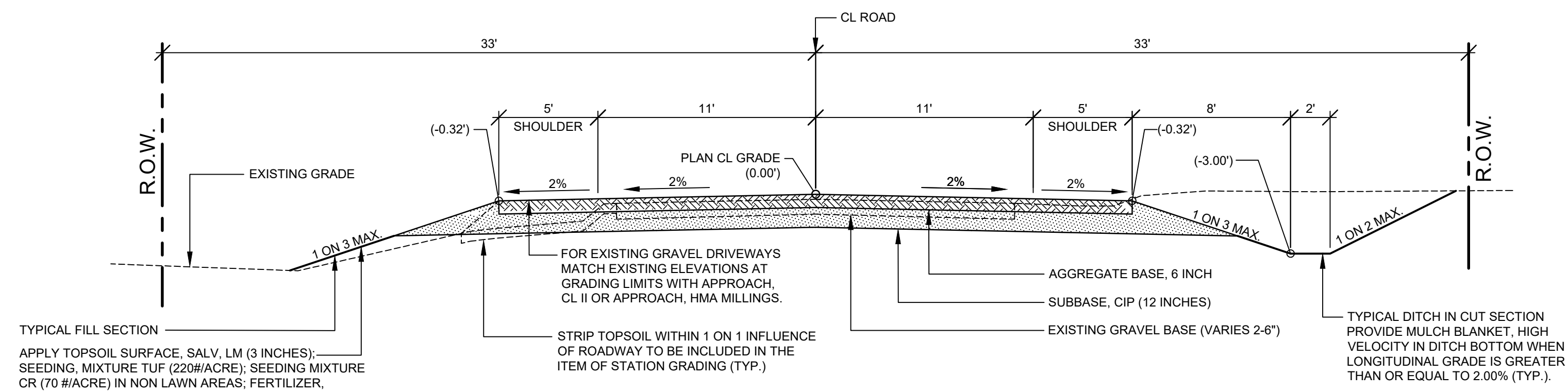
Addison Carter Wolf
 3-27-23

ADDISON C. WOLF
 REGISTERED PROFESSIONAL ENGINEER No. 6201310174

47TH STREET RECONSTRUCTION PROJECT
 OVERISEL TOWNSHIP
 COVER SHEET

DRAWN BY: ACW
 REVIEWED BY: RPB
 DATE: JANUARY 2023
 SCALE: NONE

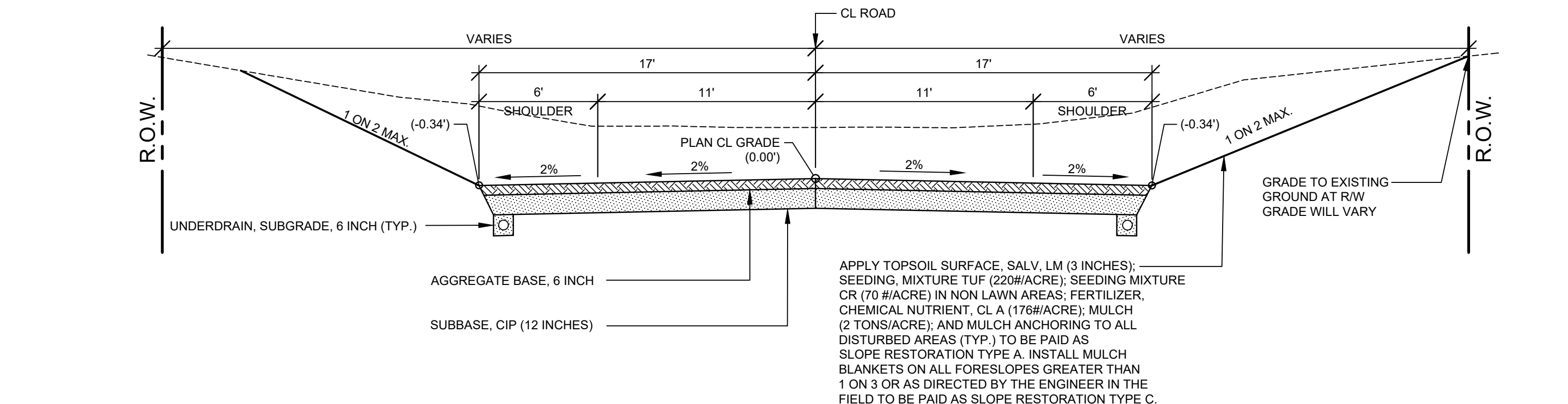
LH 400092 1



TYPICAL FILL SECTION
 APPLY TOPSOIL SURFACE, SALV. LM (3 INCHES); SEEDING, MIXTURE TUF (220#/ACRE); SEEDING MIXTURE CR (70 #/ACRE) IN NON LAWN AREAS; FERTILIZER, CHEMICAL NUTRIENT, CL A (176#/ACRE); MULCH (2 TONS/ACRE); AND MULCH ANCHORING TO ALL DISTURBED AREAS (TYP.) TO BE PAID AS SLOPE RESTORATION TYPE A. INSTALL MULCH BLANKETS ON ALL FORESLOPES GREATER THAN 1 ON 3 OR AS DIRECTED BY THE ENGINEER IN THE FIELD TO BE PAID AS SLOPE RESTORATION TYPE C.

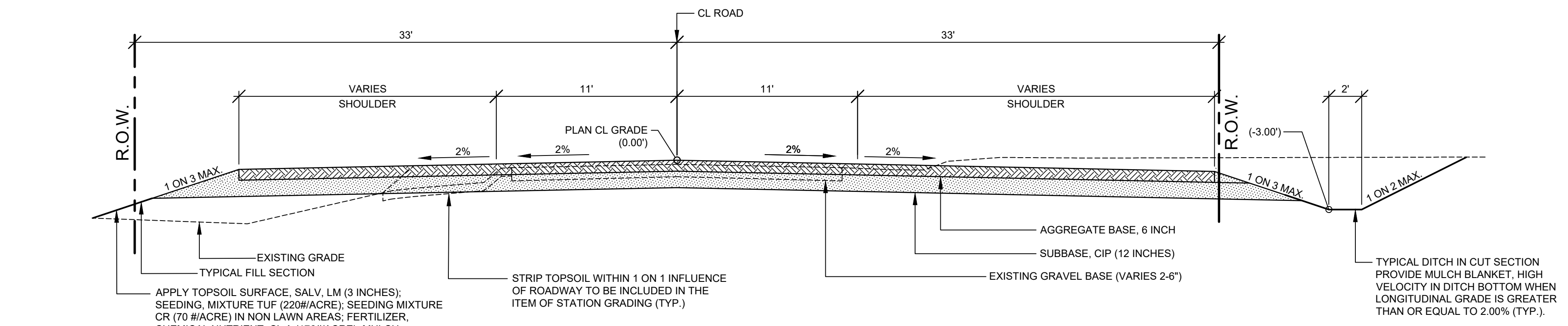
TYPICAL SECTION - 47TH STREET

SCALE: 1" = 5'
 THIS SECTION APPLIES TO:
 STA. 14+50 TO STA. 16+85 LT.
 STA. 16+50 TO STA. 16+85 RT.



TYPICAL SECTION - VALLEY GUTTER

SCALE: 1" = 5'
 THIS SECTION APPLIES TO:
 P.O.B. TO STA. 14+50 LT.
 P.O.B. TO STA. 16+50 RT.



TYPICAL SECTION - TURNAROUND

SCALE: 1" = 5'
 THIS SECTION APPLIES TO:
 STA. 16+85 TO P.O.E.

PROJECT NOTES

THE "2020 STANDARD SPECIFICATIONS FOR CONSTRUCTION" AND "STANDARD PLANS" BY THE MICHIGAN DEPARTMENT OF TRANSPORTATION (MDOT) ARE HEREBY INCORPORATED INTO THESE CONTRACT DOCUMENTS. COPIES OF THESE STANDARDS ARE AVAILABLE FOR INSPECTION AT THE OFFICE OF THE ENGINEER.

THE CONTRACTOR WILL BE RESPONSIBLE FOR CONTACTING THE ALLEGAN COUNTY ROAD COMMISSION TO NOTIFY THEM THAT WORK IS COMMENCING.

THE CONTRACTOR SHOULD NOTE THAT STATION GRADING WILL INCLUDE THE REMOVAL OF FENCES, CULVERTS, BRUSH, TREES SMALLER THAN 6". CONCRETE FOUNDATIONS, AND MISCELLANEOUS ITEMS AS REQUIRED AND WILL ALSO INCLUDE ALL EARTH EXCAVATION, EMBANKMENT, AND ALL OTHER OPERATIONS NECESSARY TO DEVELOP THE DESIRED CROSS SECTION. ALL TOPSOIL AND OTHER UNSUITABLE MATERIAL LOCATED BENEATH THE PROPOSED PAVEMENT SECTION WILL BE REMOVED TO THE SUBGRADE ELEVATION AS PART OF STATION GRADING. ALL TOPSOIL REMOVED MAY BE STOCKPILED AND REUSED AS TOPSOIL SURFACE, SALV. LM.

ALL FILL FOR THIS PROJECT MUST BE OBTAINED AND FURNISHED BY THE CONTRACTOR. ALL REQUIRED FILL SHALL BE SELECTED EXCAVATED MATERIAL FROM THE SITE APPROVED BY THE ENGINEER. OR MDOT CLASS II GRANULAR MATERIAL FROM BORROW. EXCESS FILL WILL BE REMOVED FROM SITE BY THE CONTRACTOR. NO BORROW OR SOIL REMOVAL ARRANGEMENTS HAVE BEEN PREARRANGED FOR THIS PROJECT AND WILL BE THE TOTAL RESPONSIBILITY OF THE CONTRACTOR.

THE SOIL BORINGS WERE TAKEN BY GREAT LAKES DRILLING COMPANY, P.O. BOX 51, ALLEGAN, MI 49010 ON JANUARY 9, 2023. THE TEST BORINGS REPRESENT POINT INFORMATION AND MAY NOT HAVE ENCOUNTERED ALL THE TYPES AND MATERIALS WHICH ARE PRESENT AT THE SITE. THESE BORING LOGS DO NOT CONSTITUTE A GUARANTEE OF THE SOIL OR GROUNDWATER CONDITIONS, OR THAT THE TEST BORINGS ARE AN EXACT REPRESENTATION OF THE SOIL OR GROUNDWATER CONDITIONS AT ALL POINTS ON THE SITE.

SEE PLAN AND PROFILE SHEETS FOR SOIL BORING DATA.

DRIVE REPLACEMENT WILL BE AS SHOWN ON THE PLANS OR AS DIRECTED BY THE ENGINEER IN THE FIELD.

THE ITEM OF SUBBASE, CIP WILL BE PAID FOR AT PLAN QUANTITY EXCEPT IN THE CASE OF A DESIGN CHANGE OR DEMONSTRATED ERROR.

AS PART OF THIS PROJECT THE CONTRACTOR WILL COORDINATE WITH THE ALLEGAN COUNTY ROAD COMMISSION TO PRESERVE AND RESET ALL GOVERNMENT CORNERS WITHIN THE PROJECT LIMITS.

CONTRACTOR WILL RELOCATE ALL MAILBOXES TO A TEMPORARY CENTRAL LOCATION APPROVED BY THE POSTAL SERVICE PRIOR TO CONSTRUCTION. CONTRACTOR SHALL INSTALL A 1" x 3" STAKE WITH THE RESPECTIVE PROPERTY ADDRESS WRITTEN ON IT IN THE FRONT YARD OF EACH RESIDENCE TO ASSIST WITH IDENTIFICATION FOR EMERGENCY VEHICLES. PAYMENT FOR RELOCATION WILL BE INCLUDED IN THE ITEM OF PROJECT CLEANUP. AT THE COMPLETION OF THE PROJECT SAID MAILBOXES SHALL BE RESET AT THEIR APPROPRIATE LOCATIONS.

ALL DISTURBED AREAS NOT TO BE PAVED WILL BE RESTORED WITH TOPSOIL SURFACE, SALV. LM (3 INCHES), MDT SEED MIXTURE TUF (220#/ACRE); SEEDING MIXTURE CR (70 #/ACRE) IN NON LAWN AREAS; FERTILIZER, CHEMICAL NUTRIENT, CL A (176#/ACRE); AND MULCH AND MULCH ANCHORING (2 TON/ACRE). TO BE PAID AS SLOPE RESTORATION, TYPE A. SEE SESC PLAN FOR AREAS TO USE HIGH VELOCITY MULCH BLANKET, TO BE PAID AS SLOPE RESTORATION TYPE C.

ADEQUATE DUST CONTROL MEASURES WILL BE MAINTAINED BY THE CONTRACTOR AS DIRECTED BY THE ENGINEER IN THE FIELD, TO BE INCLUDED IN THE VARIOUS ITEMS OF WORK.

MULCH BLANKET, HIGH VELOCITY WILL BE PLACED ON THE BOTTOM OF ALL DITCHES WHEN THE LONGITUDINAL GRADE IS GREATER THAN OR EQUAL TO 2.00% UNLESS OTHERWISE NOTED, OR AS DIRECTED BY THE ENGINEER IN THE FIELD TO BE PAID AS SLOPE RESTORATION TYPE C.

WHEN FIELD DRAIN TILES ARE ENCOUNTERED IN THE EXISTING DITCHES, THE CONTRACTOR WILL EXTEND THEM AS REQUIRED WITH UNDERDRAIN, SUBGRADE 4" OR 6" AND ADJUST THE DITCH GRADES AS NECESSARY TO PROVIDE POSITIVE DRAINAGE AS DIRECTED BY THE ENGINEER IN THE FIELD. THE COST OF THE CONNECTION WILL BE INCLUDED IN THE NEW PIPE ITEM. IF THE ENGINEER DETERMINES THAT AN EXISTING TILE IS TOO LONG THE CONTRACTOR WILL REMOVE THE TILE AS NECESSARY, TO BE INCLUDED IN THE ITEM OF STATION GRADING.

THE CONTRACTOR IS RESPONSIBLE FOR MAINTAINING EXISTING DRAINAGE PATTERNS, AND WILL RESOLVE ANY DRAINAGE PROBLEMS ON ADJACENT PROPERTIES WHICH MAY RESULT FROM THE CONTRACTOR'S ACTIVITIES.

DATUM REFERS TO NAVD88 DATUM.

DIMENSIONS TAKE PRECEDENCE OVER SCALE. CONTRACTOR TO VERIFY ALL DIMENSIONS IN FIELD.

UTILITY NOTES

FOR PROTECTION OF UNDERGROUND UTILITIES AND IN CONFORMANCE WITH PUBLIC ACT 174 OF 2013, THE CONTRACTOR WILL CONTACT "MISS DIG" AT 811, A MINIMUM OF 72 HOURS, EXCLUDING SATURDAYS, SUNDAYS, AND HOLIDAYS, PRIOR TO BEGINNING EACH EXCAVATION IN AREAS WHERE PUBLIC UTILITIES HAVE NOT BEEN PREVIOUSLY LOCATED. MEMBERS WILL THIS BE ROUTINELY NOTIFIED. THIS DOES NOT RELIEVE THE CONTRACTOR OF THE RESPONSIBILITY OF NOTIFYING UTILITY OWNERS WHO MAY NOT BE A PART OF THE "MISS DIG" ALERT SYSTEM.

THE CONTRACTOR WILL LOCATE ALL ACTIVE UNDERGROUND UTILITIES PRIOR TO STARTING WORK AND WILL CONDUCT HIS OPERATIONS IN A MANNER AS TO ENSURE THAT THOSE UTILITIES NOT REQUIRING RELOCATION WILL NOT BE DISTURBED.

PRELIMINARY UTILITY COORDINATION WAS PERFORMED AND ALL UTILITIES HAVE VERIFIED LOCATIONS. CONSUMERS ELECTRIC HAS STATED THEY HAVE NO CONFLICTS. SEMCO ENERGY HAS FACILITIES NEAR ACTIVE CONSTRUCTION LOCATIONS; CAUTION MUST BE TAKEN IN AND AROUND THESE AREAS. FRONTIER COMMUNICATIONS WILL BE ABANDONING THEIR CABLE BY MAY 31, 2023.

MISCELLANEOUS QUANTITIES

DESCRIPTION	QUANTITY	UNIT
SUBGRADE UNDERCUTTING, TYPE II	300	CYD
AGGREGATE, BA	50	TON
GEOTEXTILE, STABILIZATION	500	SYD
RIPRAP, PLAIN	40	SYD
EROSION CONTROL, SILT FENCE	500	FT
EROSION CONTROL, CHECK DAM	100	FT
APPROACH, CL II	15	TON
CULV, CL F, 12 INCH	40	FT
CULV, CL F, 18 INCH	40	FT

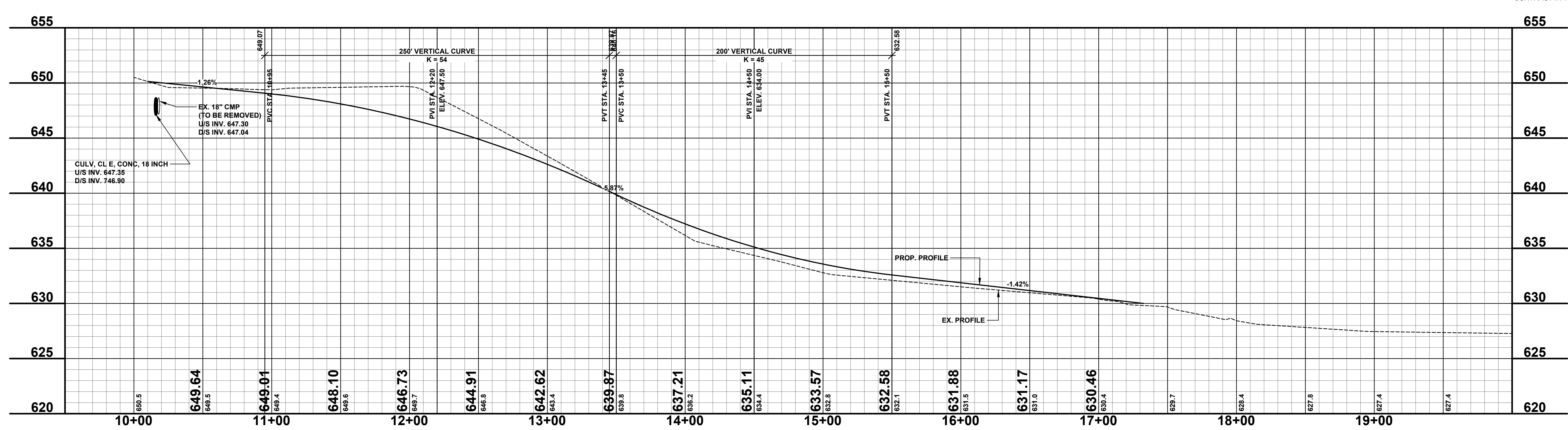
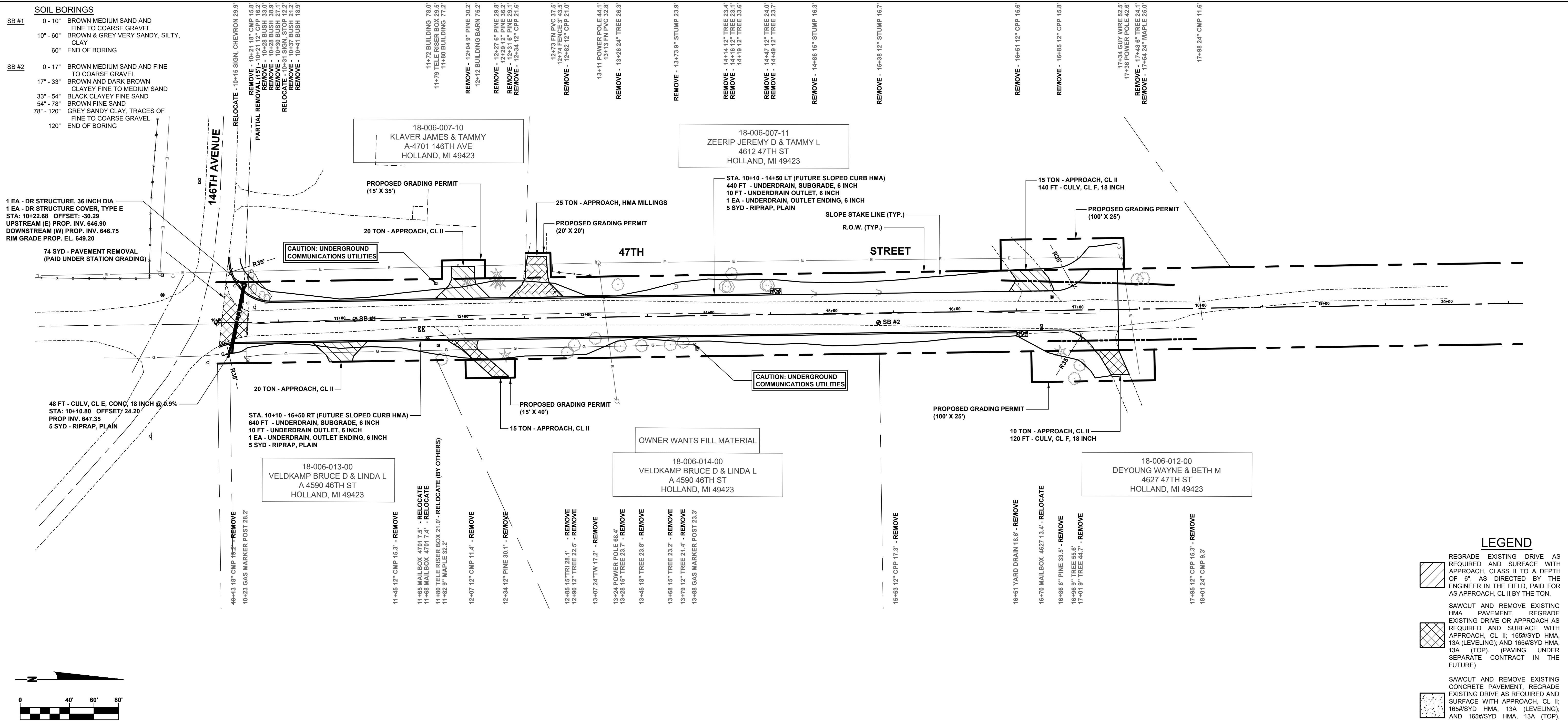
**Board of County Road Commissioners
 Of Allegan County**
 1308 LINCOLN ROAD
 ALLEGAN, MICHIGAN 49010-9762
 www.alleganroads.org
 TELEPHONE (269) 673-2184 FAX (269) 673-5922

REVISIONS	NO.	DATE	DESCRIPTION			
1	2	3	4	5	6	7

47TH STREET RECONSTRUCTION PROJECT
 OVERISEL TOWNSHIP - 146TH AVENUE NORTH 0.14 MILES
 TYPICAL SECTIONS, DETAILS, & NOTES

DRAWN BY: ACW
 REVIEWED BY: RPB
 DATE: JANUARY 2023
 SCALE: AS NOTED

LH 400092 2



**Board of County Road Commissioners
Of Allegan County**

1308 LINCOLN ROAD
ALLEGAN, MICHIGAN 49010-9762
www.alleganroads.org FAX (269) 673-5922
TELEPHONE (269) 673-2184

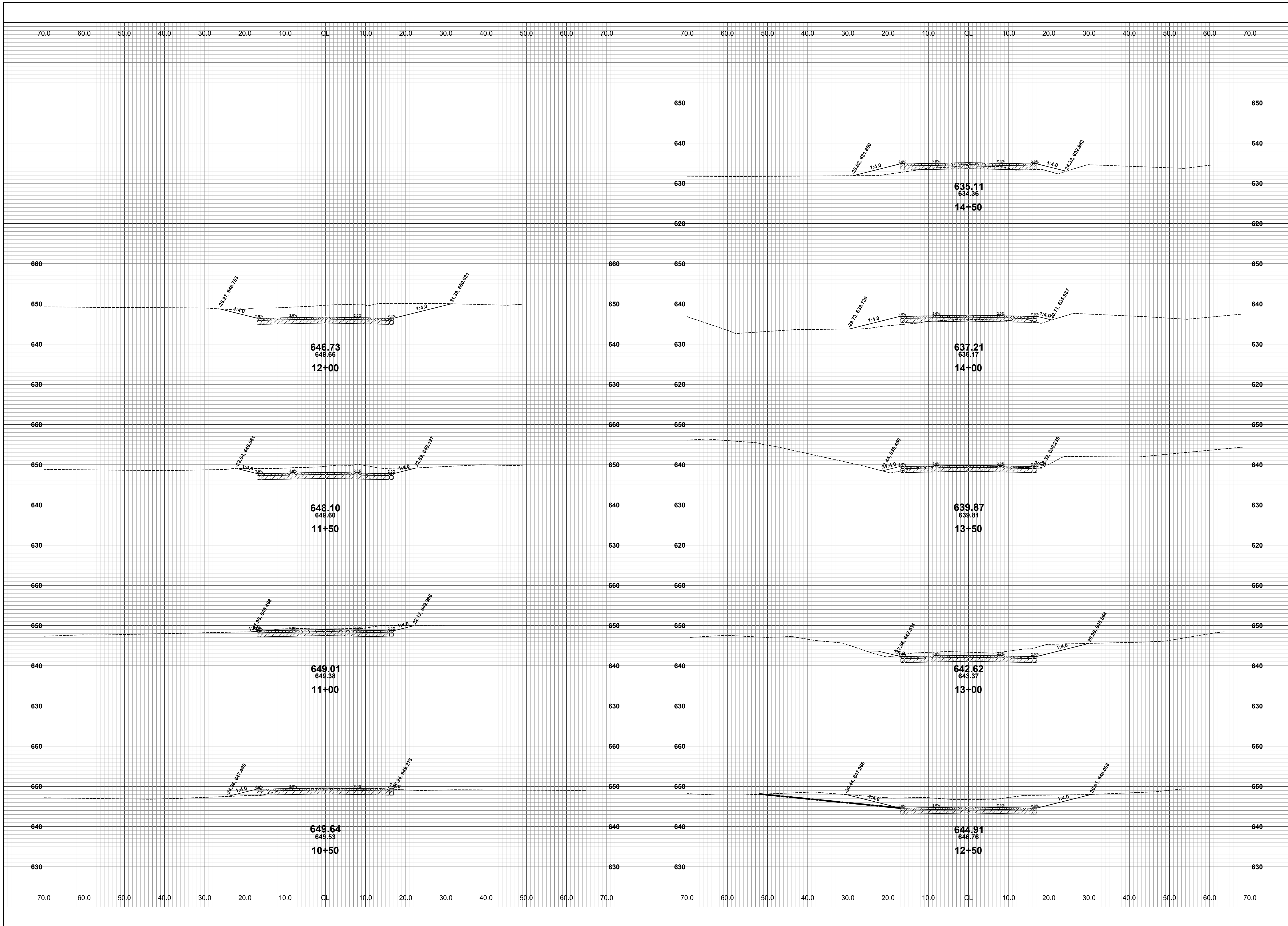
REVISIONS
1
2
3
4
5
6
7

47TH STREET RECONSTRUCTION PROJECT
OVERISEL TOWNSHIP - 146TH AVENUE NORTH 0.14 MILES

PLAN & PROFILE - STA. P.O.B. TO STA. P.O.E.

DRAWN BY: ACW
 REVIEWED BY:
 DATE: JANUARY 2023
 SCALE: 1"= 40'H, 5V

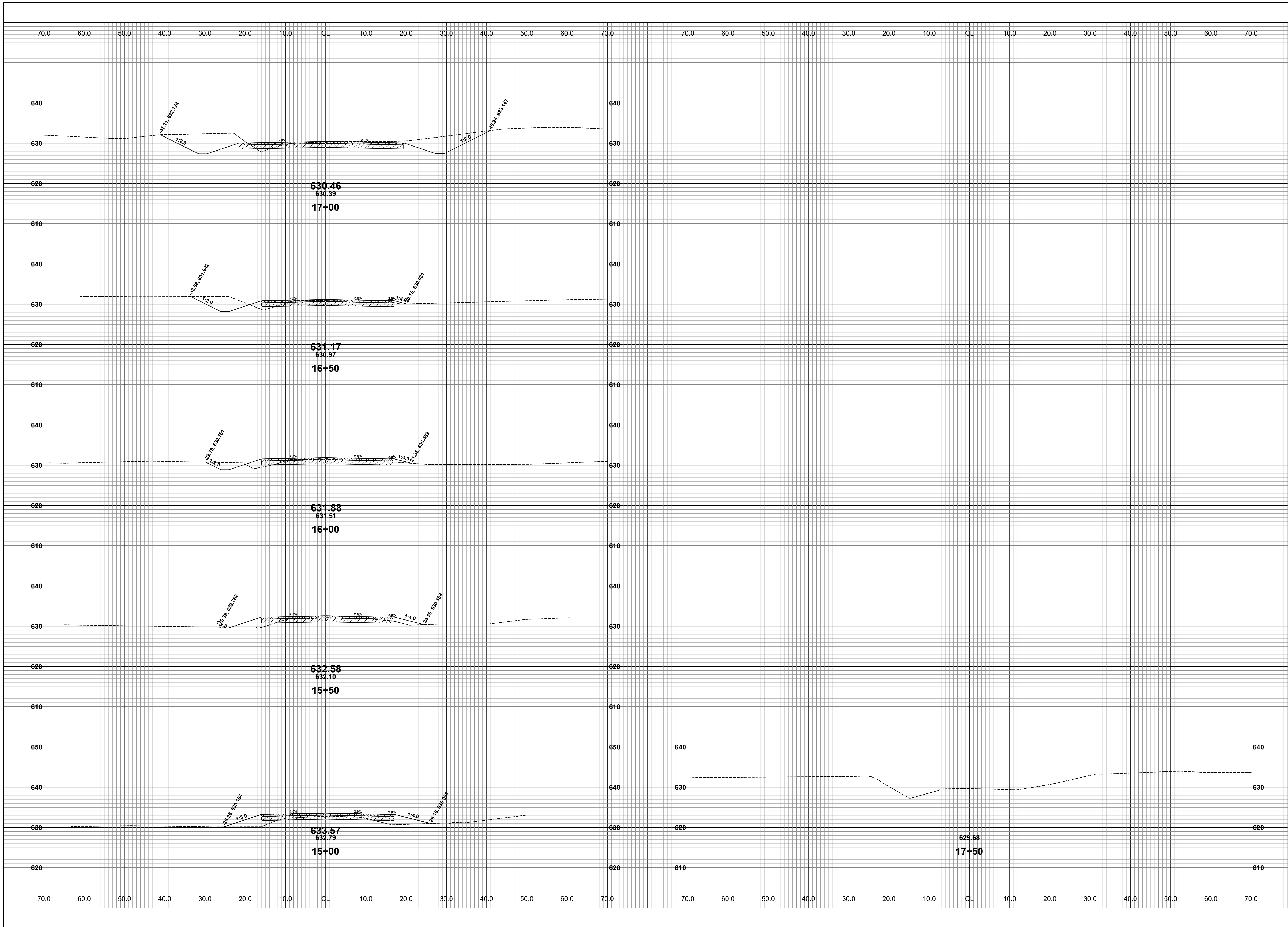
LH 400092 3



REVISIONS	
1	
2	
3	
4	
5	
6	
7	

47TH STREET RECONSTRUCTION PROJECT
 OVERISEL TOWNSHIP - 146TH AVENUE NORTH 0.14 MILES
 CROSS SECTIONS - STA. 10+50 TO STA. 14+50

DRAWN BY: ACW
 REVIEWED BY:
 DATE: MARCH 2023
 SCALE: 1" = 10'



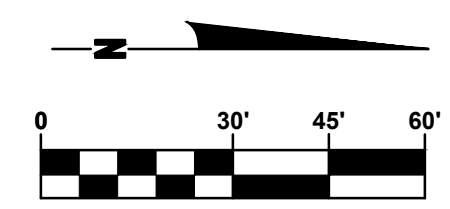
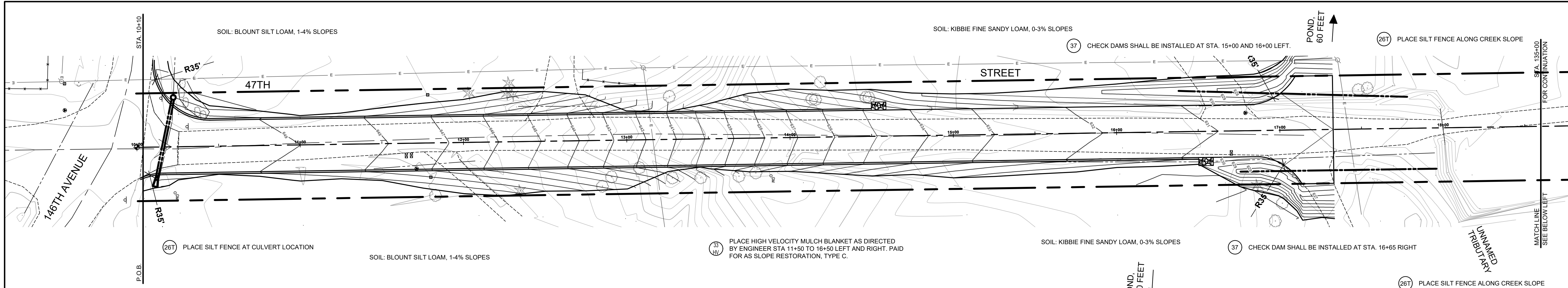
**Board of County Road Commissioners
Of Allegan County**
1308 LINCOLN ROAD
ALLEGAN, MICHIGAN 49010-9762
TELEPHONE (269) 673-2184 www.alleganroads.org FAX (269) 673-5922

REVISIONS	
1	
2	
3	
4	
5	
6	
7	

47TH STREET RECONSTRUCTION PROJECT
OVERISEL TOWNSHIP - 146TH AVENUE NORTH 0.14 MILES
CROSS SECTIONS - STA. 15+00 TO STA. 17+50

DRAWN BY: ACW
REVIEWED BY:
DATE: MARCH 2023
SCALE: 1"= 10'

LH 400092 5



SOIL EROSION & SEDIMENTATION CONTROL NOTES

1. ALL CONSTRUCTION METHODS WILL BE DONE IN COMPLIANCE WITH THE MICHIGAN SOIL EROSION AND SEDIMENTATION CONTROL ACT. THE CONTRACTOR WILL BE RESPONSIBLE FOR OBTAINING A "SOIL EROSION PERMIT" FROM THE COUNTY AND/OR A "PERMIT BY RULE/NOTICE OF COVERAGE" FROM THE MDEQ PRIOR TO START OF CONSTRUCTION. THE CONTRACTOR WILL BE RESPONSIBLE FOR COMPLYING WITH ALL REQUIREMENTS OF THE COUNTY "SOIL EROSION PERMIT" AND FOR ALL CERTIFIED STORM WATER INSPECTION SERVICE REQUIRED BY THE "PERMIT BY RULE." EROSION CONTROL MEASURES SHOWN ON THE PLANS ARE THE MINIMUM REQUIREMENTS AND WILL NOT RELIEVE THE CONTRACTOR'S RESPONSIBILITY FOR PROVIDING ALL REQUIRED EROSION CONTROL MEASURES.
 2. AVOID UNNECESSARY DISTURBING OR REMOVING OF EXISTING VEGETATED TOPSOIL OR EARTH COVER, THESE COVER AREAS ACT AS SEDIMENT FILTERS.
 3. ALL TEMPORARY SOIL EROSION PROTECTION WILL REMAIN IN PLACE UNTIL REMOVAL IS REQUIRED FOR FINAL CLEAN UP AND APPROVAL.
 4. GEOTEXTILE SILT FENCE WILL BE INSTALLED AS REQUIRED WHEN CROSSING CREEKS OR WHEN ADJACENT TO WETLANDS OR SURFACE WATER BODIES TO PREVENT SILTATION AND ELSEWHERE AS DIRECTED BY THE ENGINEER. SEEDING AND/OR SODDING WILL BE INSTALLED ON CREEK BANKS IMMEDIATELY AFTER CONSTRUCTION TO PREVENT EROSION.
 5. MAINTENANCE, CLEANING, AND REMOVAL OF THE VARIOUS SEDIMENT CONTROL MEASURES WILL BE INCLUDED IN THE VARIOUS EROSION CONTROL ITEMS.
 6. SOIL TYPE LOCATIONS ARE APPROXIMATED FROM THE UNITED STATES DEPARTMENT OF AGRICULTURE'S WEB SOIL SURVEY MAPS. DETAILED PROPERTIES FOR EACH SOIL TYPE CAN BE FOUND ON THEIR WEBSITE: WEBSOILSURVEY.NRCS.USDA.GOV
 7. TEMPORARY EROSION CONTROL MEASURES WILL NOT BE MANDATORY IF STORMWATER IS DETERMINED TO BE TOPOGRAPHICALLY INCAPABLE OF LEAVING SITE.
 8. SLOPE STAKE LINES AS CALLED OUT IN THE PLAN SHEETS DEFINE THE EARTH CHANGE LIMITS FOR THIS PROJECT.
 9. ALLEGAN COUNTY ROAD COMMISSION ASSUMES RESPONSIBILITY FOR MAINTENANCE OF PERMANENT SOIL EROSION & SEDIMENTATION CONTROL MEASURES ONE YEAR AFTER FINAL PROJECT ACCEPTANCE AS DEFINED UNDER THE SOIL EROSION AND SEDIMENTATION CONTROL OPERATING PROCEDURES FOR THE ALLEGAN COUNTY ROAD COMMISSION.
- # NUMBER IN CIRCLE REFERS TO NUMBERED DETAILS ON MDOT STANDARD PLAN R-96 SERIES, SOIL EROSION & SEDIMENTATION CONTROL MEASURES. "P" DENOTES PERMANENT MEASURE AND "T" DENOTES TEMPORARY MEASURE. SOIL EROSION CONTROL PLANS DENOTE MINIMUM EROSION MEASURES REQUIRED AS DESCRIBED BELOW.
 3P ALL DISTURBED AREAS NOT PAVED OR GRAVELED SHALL BE RESTORED UNDER THE PAY ITEM SLOPE RESTORATION TYPE A. THIS PAY ITEM INCLUDES PLACING MDOT SEEDING, MIXTURE TUF APPLIED AT A RATE OF 220 LB/ACRE, FERTILIZER, CHEMICAL NUTRIENT, CL A APPLIED AT A RATE OF 176 LB/ACRE, MULCH AT A RATE OF 2 TON/ACRE AND MULCH ANCHORING.
 31 TEMPORARY SEEDING WILL BE PLACED AT LOCATIONS DETERMINED BY THE ENGINEER IN THE FIELD AND WILL INCLUDE SEEDING MIXTURE, CR APPLIED AT A RATE OF 70 LB/ACRE AND MULCH INCLUDED IN SLOPE RESTORATION TYPE A.
 41 DUST CONTROL MAY BE REQUIRED ON THE SUBGRADE CONSTRUCTION AND WILL INCLUDE APPLYING FRESH WATER TO BE INCLUDED IN THE ITEM OF STATION GRADING. DUST CONTROL ON THE AGGREGATE BASE COURSE WILL BE ACCOMPLISHED BY APPLYING FRESH WATER (INCLUDED IN THE ITEM OF AGGREGATE BASE, INCH) AS DIRECTED BY THE PROJECT ENGINEER.
 7P INSTALL RIPRAP, PLAIN OR RIPRAP, HEAVY AS DIRECTED BY THE ENGINEER IN THE FIELD. THE RIPRAP, PLAIN AND RIPRAP, HEAVY PAY ITEMS WILL INCLUDE A GEOTEXTILE UNDERLAYMENT.
 26T SILT FENCE WILL BE INSTALLED AT CREEK CROSSINGS, ADJACENT TO ALL WETLANDS AND SURFACE WATERS, AND OTHER LOCATIONS AS DIRECTED BY THE ENGINEER. EACH SILT FENCE WILL BE INSTALLED GENERALLY ALONG THE SAME CONTOUR ELEVATION.
 32 CONTRACTOR WILL PROVIDE DOZER TRACKING PERPENDICULAR TO THE SLOPE TO REDUCE WATER AND WIND EROSION. THIS WILL BE PERFORMED AT LOCATIONS SHOWN OR AS DIRECTED BY THE ENGINEER IN THE FIELD, TO BE INCLUDED IN THE ITEM OF EMBANKMENT.
 33 HIGH VELOCITY MULCH BLANKETS WILL BE USED ON STEEP BANKS. PROVIDE MULCH BLANKET, HIGH VELOCITY CENTERED ON ALL DITCH BOTTOMS WITH A LONGITUDINAL GRADE OF 2.00% OR GREATER AND AT OTHER LOCATIONS AS DIRECTED BY THE ENGINEER IN THE FIELD, PAID AS SLOPE RESTORATION TYPE C.
 37 CHECK DAMS WILL BE INSTALLED AT THE LOCATIONS SHOWN ON THE PLAN OR AS DIRECTED BY THE ENGINEER IN THE FIELD.

REVISIONS	
1	
2	
3	
4	
5	
6	
7	

47TH STREET RECONSTRUCTION PROJECT
OVERISEL TOWNSHIP - 146TH AVENUE NORTH 0.14 MILES

DRAWN BY: ACW
 REVIEWED BY: RK
 DATE: FEBRUARY 2023
 SCALE: 1"= 40'H, 5V

LH 400092 6

Board of County Road Commissioners
Of Allegan County
 1308 LINCOLN ROAD
 ALLEGAN, MICHIGAN 49010-9762
 TELEPHONE (269) 673-2184 www.alleganroads.org FAX (269) 673-5922