

ALLEGAN COUNTY ROAD COMMISSION

SAUGATUCK TOWNSHIP CUL-DE-SAC IMPROVEMENT PROJECT

CRESCENT DRIVE, WINTERGREEN DRIVE, CHESTNUT LANE

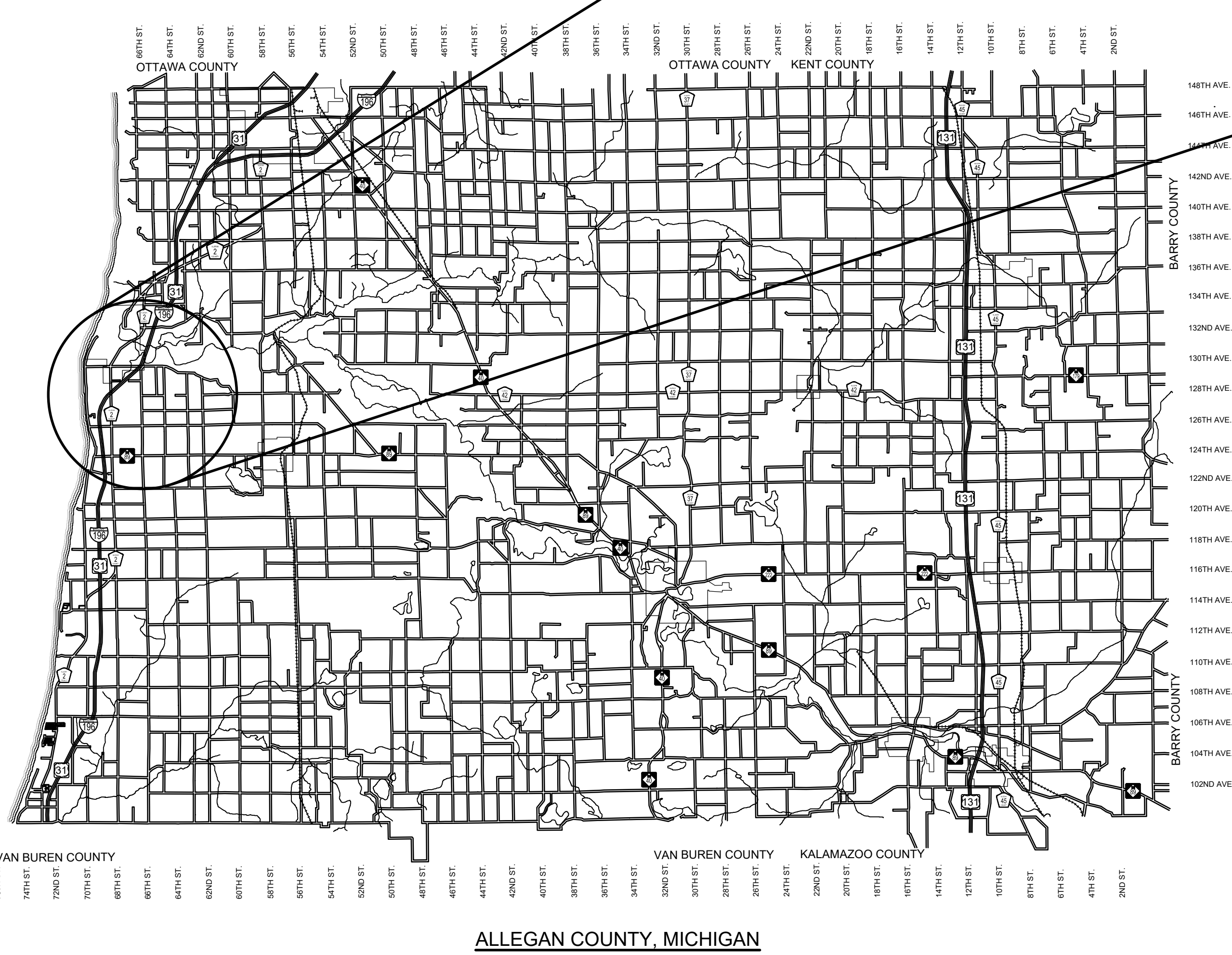
SAUGATUCK TOWNSHIP

EXCEPT WHERE OTHERWISE INDICATED ON THESE PLANS OR IN THE PROPOSAL AND SUPPLEMENTAL SPECIFICATIONS CONTAINED THEREIN, ALL MATERIALS AND WORKMANSHIP SHALL BE IN ACCORDANCE WITH THE 2012 MICHIGAN DEPARTMENT OF TRANSPORTATION STANDARD SPECIFICATIONS FOR CONSTRUCTION.

THE PLACING OF PAVEMENT MARKINGS AND TRAFFIC CONTROL SIGNS SHALL BE DONE IN ACCORDANCE WITH THE 2011 MICHIGAN MANUAL OF UNIFORM TRAFFIC CONTROL DEVICES AS AMENDED.

THE IMPROVEMENTS COVERED BY THESE PLANS ARE IN ACCORDANCE WITH THE AMERICAN ASSOCIATION OF STATE HIGHWAY AND TRANSPORTATION OFFICIALS, 2011 EDITION, A POLICY ON GEOMETRIC DESIGN OF HIGHWAYS AND STREETS.

THE CONTRACTOR SHALL DIAL MISS DIG @ 811 FOR PROTECTION OF UNDER GROUND UTILITIES AND IN CONFORMANCE WITH PUBLIC ACT 174 OF 2013 A MINIMUM OF THREE FULL WORKING DAYS, EXCLUDING SATURDAYS, SUNDAYS AND HOLIDAYS PRIOR TO BEGINNING EACH EXCAVATION IN AREAS WHERE PUBLIC UTILITIES HAVE NOT BEEN PREVIOUSLY LOCATED. MEMBERS WILL THUS BE ROUTINELY NOTIFIED. THIS DOES NOT RELIEVE THE CONTRACTOR OF THE RESPONSIBILITY OF NOTIFYING UTILITY OWNERS WHO MAY NOT BE A PART OF THE "MISS DIG" ALERT SYSTEM.



PROJECT LOCATION

UTILITY CONTACTS	
ELECTRIC CONSUMERS ENERGY 4000 CLAY AVE. SW GRAND RAPIDS, MI 49548 616-530-4284 JIM MIXTER grvimp@cseenergy.com	WATER AND SEWER KALAMAZOO LAKE SEWER AND WATER AUTHORITY 6448 OLD ALLEGAN RD P.O. BOX 789 SAUGATUCK, MI 49453 KLSWA@KLSWA.COM
TELEPHONE FRONTIER 269-273-0383 MR. JEREMY MCCORD JEREMY.MCCORD@FTR.COM	*MISS DIG* 811
CABLE COMCAST 11921 E M-89 RICHLAND, MI 49083 269-203-7114 MR. JOE SCHOPF JOSEPH_SCHOPF@CABLE.COMCAST.COM	CHARTER 4176 COMMERCIAL AVE PORTAGE, MI 49002 269-217-8152 MR. MARK BURKE MARK.BURKE@CHARTER.COM
GAS MICHIGAN GAS UTILITY 269-692-3911 MR. DAVID MAURER DAMaurer@michigangasutilities.com	

- INDEX OF PLANS**
- 1 - COVER SHEET
 - 2 - CRESCENT DRIVE
 - 3 - WINTERGREEN DRIVE
 - 4 - CHESTNUT LANE

CONTRACT FOR ROAD IMPROVEMENTS

ROADWAY CUL-DE-SAC RECONSTRUCTION INCLUDING CLEARING, GRADE ESTABLISHMENT, AGGREGATE BASE, CRUSHING AND SHAPING, HMA PAVING, AND RESTORATION ON CRESCENT DRIVE, WINTERGREEN DRIVE, AND CHESTNUT LANE, IN SAUGATUCK TOWNSHIP, ALLEGAN COUNTY.

PREPARED UNDER THE SUPERVISION OF:

JASON S. EDWARDS
REGISTERED PROFESSIONAL ENGINEER No. 59473

**Board of County Road Commissioners
Of Allegan County**

1308 LINCOLN ROAD
ALLEGAN, MICHIGAN 49010-9762
TELEPHONE (269) 673-2184 www.alleganroads.org FAX (269) 673-5922

REVISIONS						
1						
2						
3						
4						
5						
6						
7						

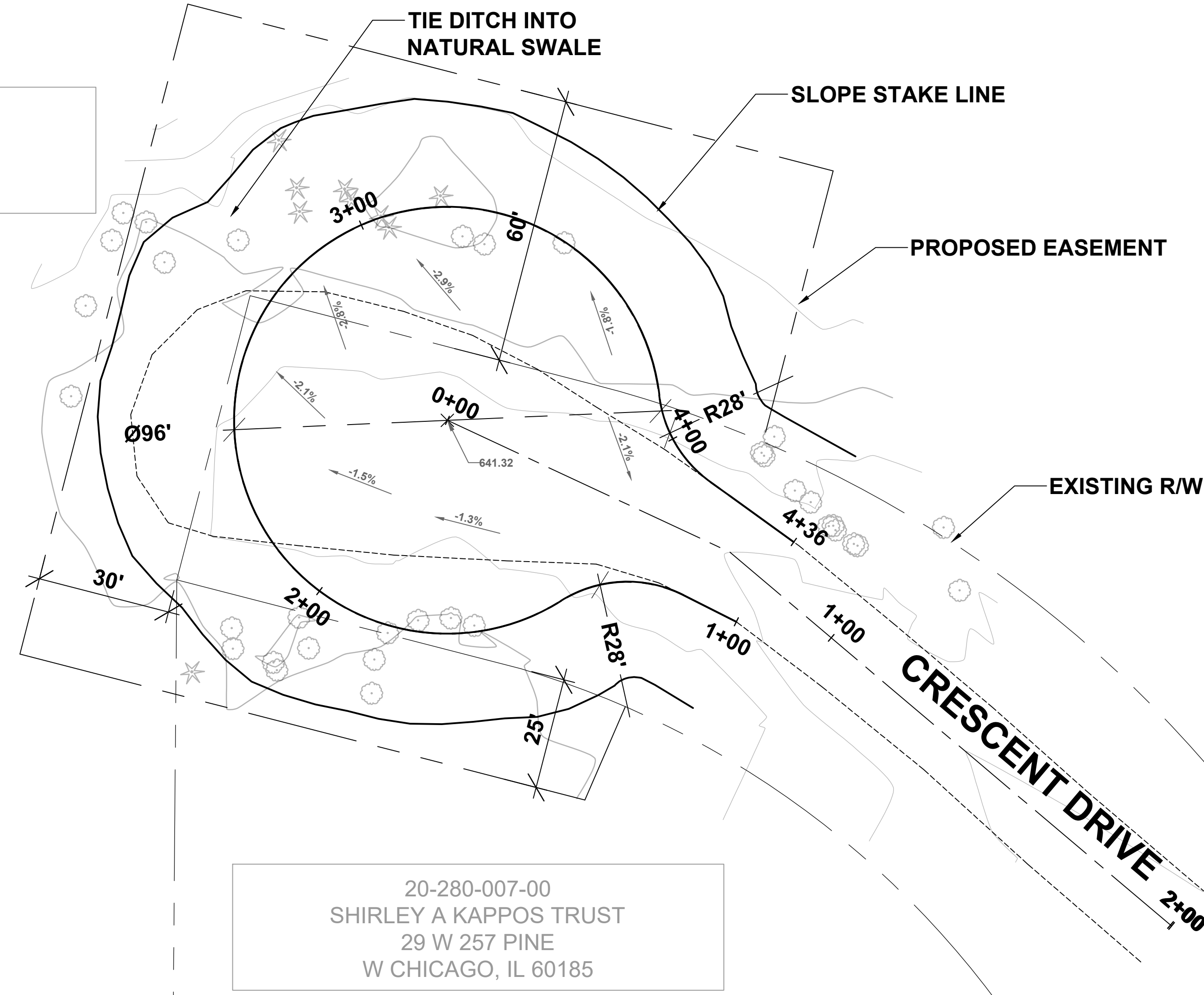
CUL-DE-SAC IMPROVEMENT PROJECT

CRESCENT DRIVE, WINTERGREEN DRIVE, CHESTNUT LANE

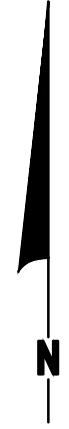
COVER SHEET

DRAWN BY: RPB
REVIEWED BY:
DATE: AUGUST 2018
SCALE: NONE

20-022-041-00
SHIRLEY A KAPPOS TRUST
29 W 257 PINE
W CHICAGO, IL 60185



NOTES: REMOVE ALL TREES IN
PROPOSED EASEMENT



20-022-042-00
MARTHA J JEFFREYS
2846 64TH ST
FENVILLE, MI 49408

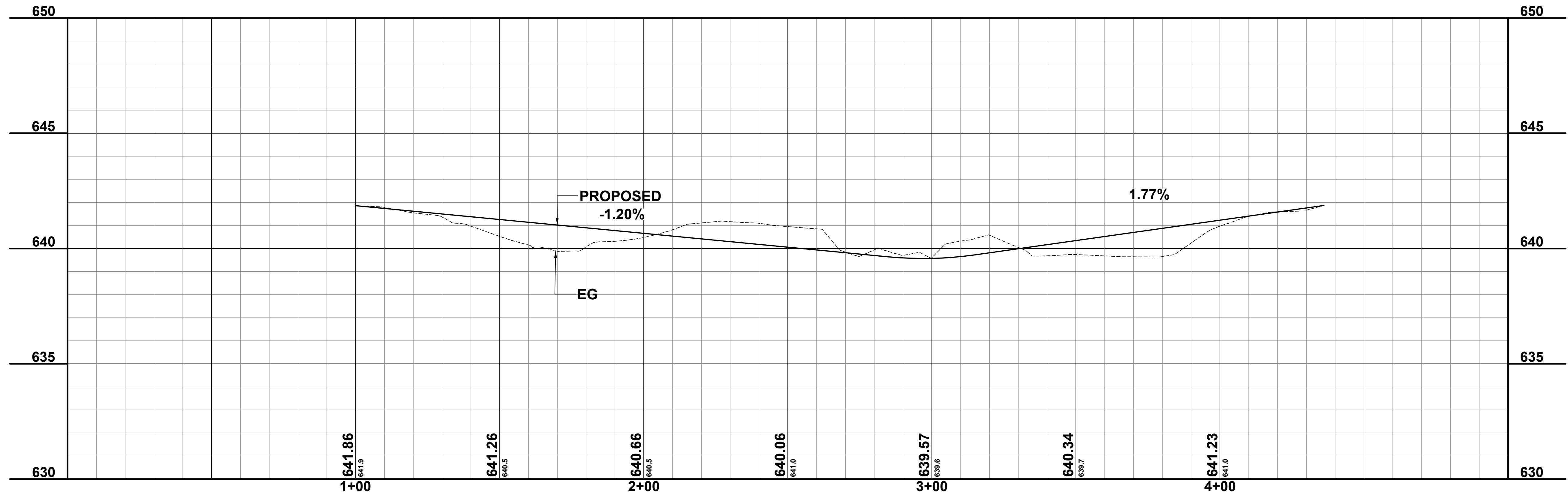
20-280-007-00
SHIRLEY A KAPPOS TRUST
29 W 257 PINE
W CHICAGO, IL 60185

20-280-038-00
J&J ARNOLDINK LLC
723 OLD ORCHARD RD
HOLLAND, MI 49423

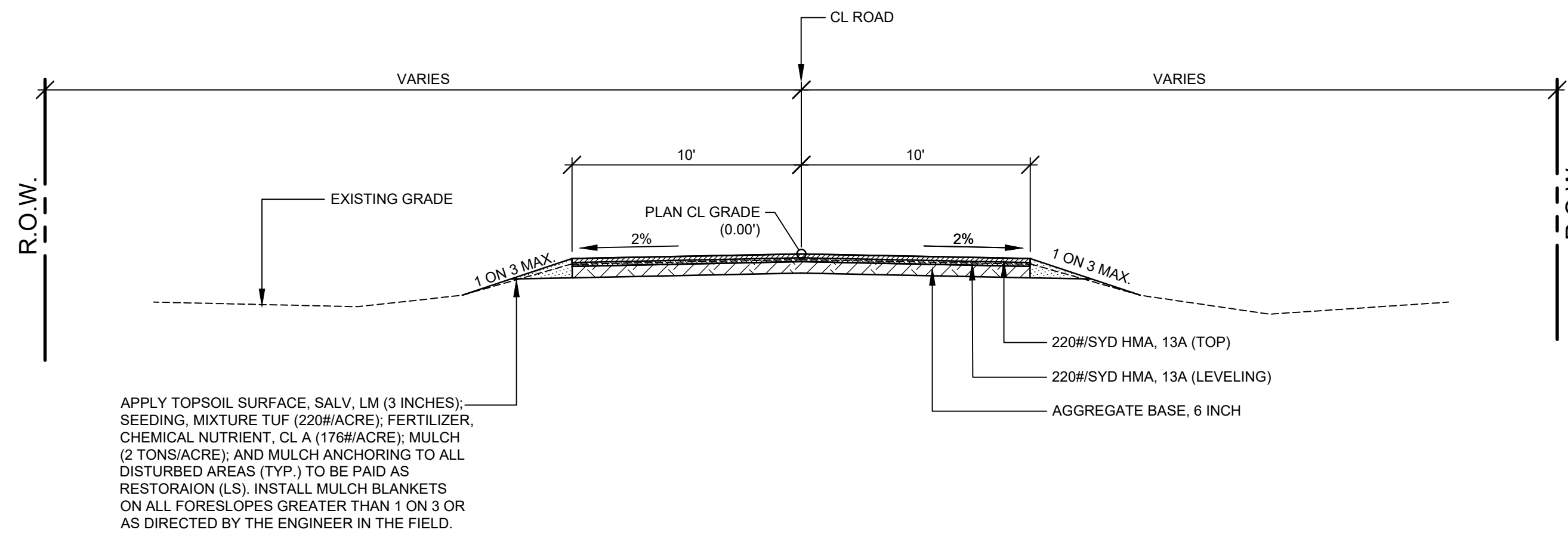
REVISIONS	
1	
2	
3	
4	
5	
6	
7	

CRESCENT DRIVE CUL-DE-SAC
SAUGATUCK TOWNSHIP
PLAN & PROFILE - STA. 1+00 TO STA. 4+36

DRAWN BY: RPB
REVIEWED BY:
DATE: JULY 2018
SCALE: 1"= 20'H, 5'V

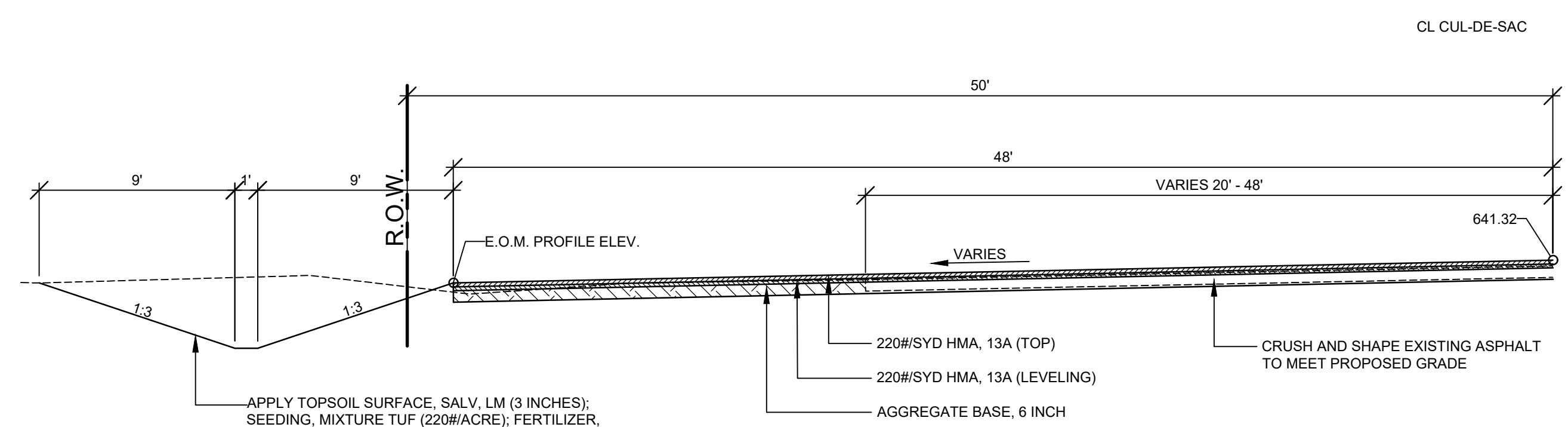


EDGE OF CUL-DE-SAC PROFILE



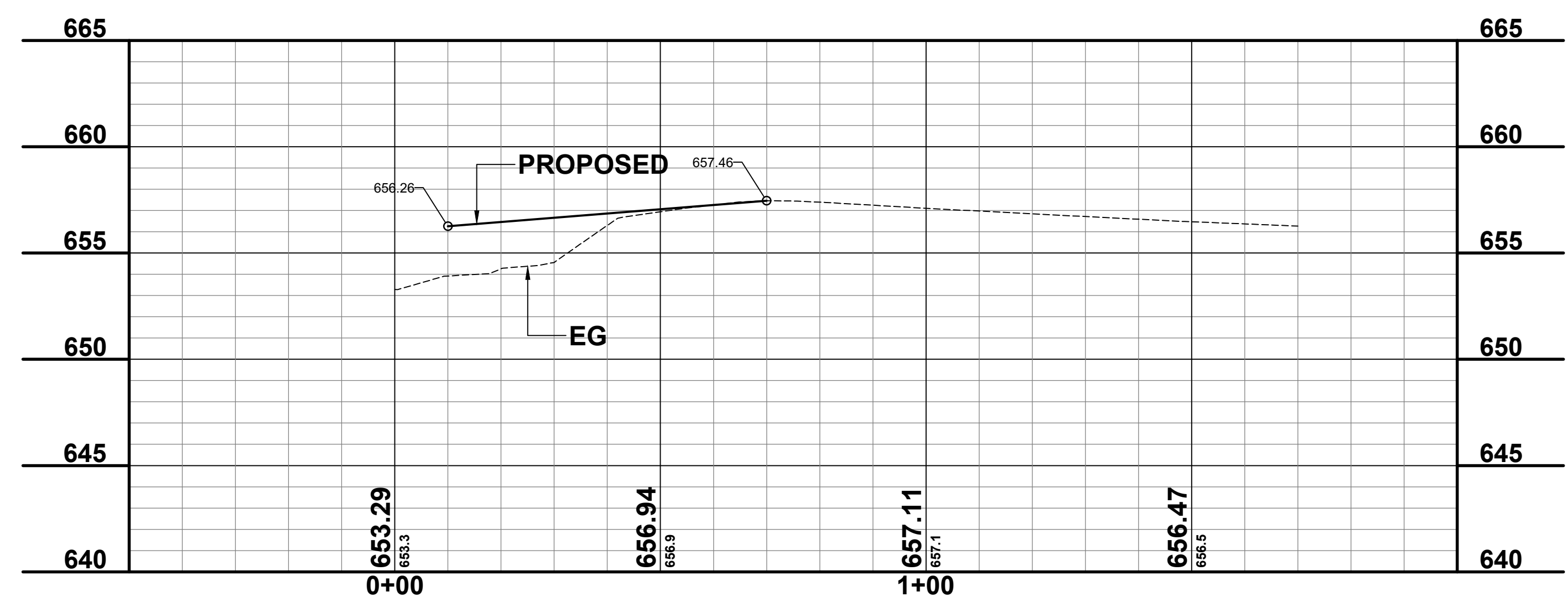
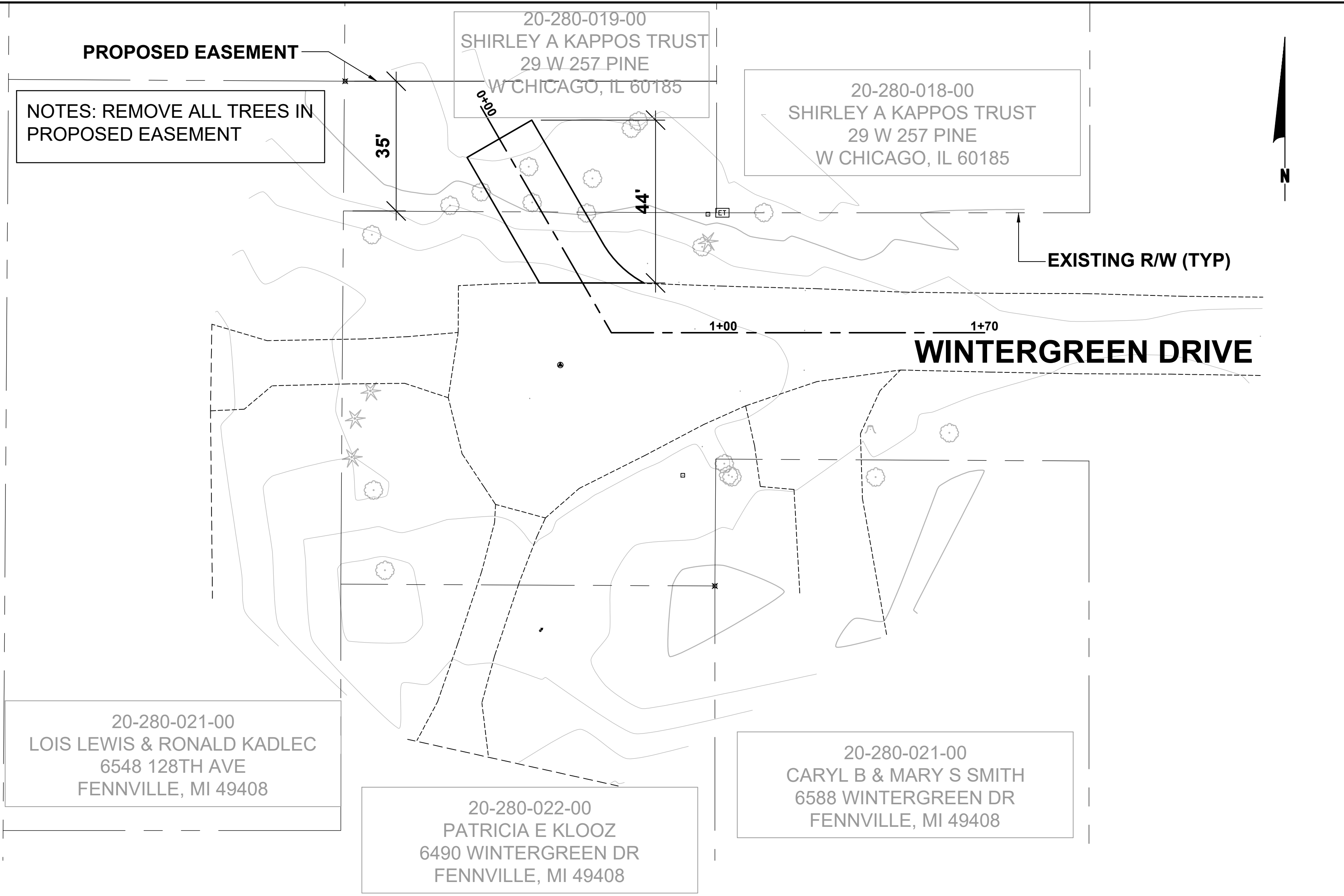
TYPICAL SECTION - WINTERGREEN DRIVE

SCALE: 1" = 5'
THIS SECTION APPLIES TO:
0+10 TO 0+54.50



TYPICAL SECTION - CRESCENT CUL-DE-SAC

SCALE: 1" = 5'
THIS SECTION APPLIES TO:
CRESCENT DRIVE



PROFILE WINTERGREEN PROPOSED

**Board of County Road Commissioners
Of Allegan County**

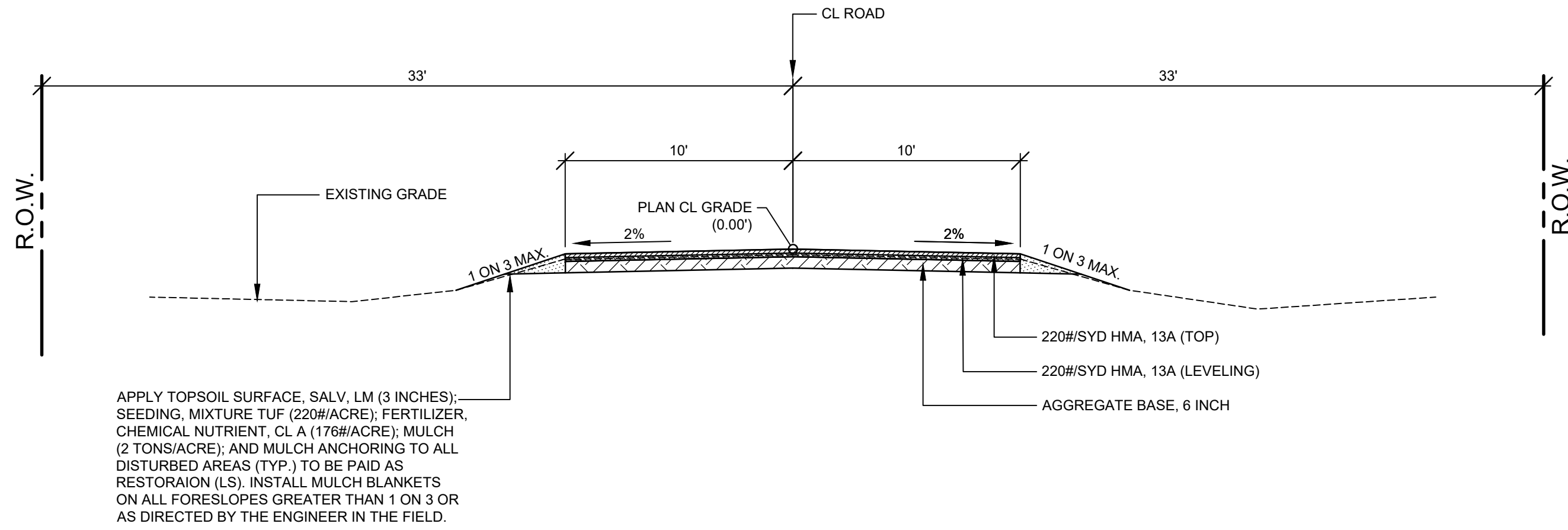
1308 LINCOLN ROAD
ALLEGAN, MICHIGAN 49010-9762
www.alleganroads.org
TELEPHONE (269) 673-2184 FAX (269) 673-5922

REVISIONS
1
2
3
4
5
6
7

WINTERGREEN DRIVE
SAUGATUCK TOWNSHIP

PLAN & PROFILE - STA. 0+00 TO STA. 1+70

DRAWN BY: RPB
REVIEWED BY:
DATE: JULY 2018
SCALE: 1" = 20'H, 5'V



TYPICAL SECTION - CHESTNUT LANE

SCALE: 1" = 5'
THIS SECTION APPLIES TO:
P.O.B. TO 0+27

ITEM	AWI	YIELD	PERFORMANCE GRADE
HMA, 13A (TOP)	260	220#/SYD	P.G. 64 - 28
HMA, 13A (LEVELING)		220#/SYD	P.G. 64 - 28
HMA BOND COAT (NOT A PAY ITEM)		0.05 TO 0.15 GAL/SYD	SS - 1h

HMA APPLICATION TABLE

PROJECT NOTES

THE "2012 STANDARD SPECIFICATIONS FOR CONSTRUCTION" AND "STANDARD PLANS" BY THE MICHIGAN DEPARTMENT OF TRANSPORTATION (MDOT) ARE HEREBY INCORPORATED INTO THESE CONTRACT DOCUMENTS. COPIES OF THESE STANDARDS ARE AVAILABLE FOR INSPECTION AT THE OFFICE OF THE ENGINEER.

THE CONTRACTOR SHALL BE RESPONSIBLE FOR CONTACTING THE ALLEGAN COUNTY ROAD COMMISSION TO NOTIFY THEM THAT WORK IS COMMENCING.

THE CONTRACTOR SHOULD NOTE THAT STATION GRADING INCLUDES THE REMOVAL OF FENCES, CULVERTS, BRUSH, TREES SMALLER THAN 6", CONCRETE FOUNDATIONS, AND MISCELLANEOUS ITEMS AS REQUIRED AND WILL ALSO INCLUDE ALL EARTH EXCAVATION, EMBANKMENT, AND ALL OTHER OPERATIONS NECESSARY TO DEVELOP THE DESIRED CROSS SECTION. ALL TOPSOIL AND OTHER UNSUITABLE MATERIAL LOCATED BENEATH THE PROPOSED PAVEMENT SECTION WILL BE REMOVED TO THE SUBGRADE ELEVATION AS PART OF STATION GRADING. ALL TOPSOIL REMOVED MAY BE STOCKPILED AND REUSED AS TOPSOIL SURFACE, SALV. LM.

WHEN PLAN AND PROFILE SHEETS NOTE A CHANGE IN THE EXISTING PROFILE, THE CONTRACTOR WILL REMOVE AND STOCKPILE THE PULVERIZED AGGREGATE BASE, CUT OR FILL THE STATIONS TO PROPOSED CLAY GRADE, AND REDISTRIBUTE THE PULVERIZED AGGREGATE BASE TO A MINIMUM DEPTH OF 6 INCHES. THIS WORK WILL BE INCLUDED IN THE ITEM OF STATION GRADING. UNSUITABLE MATERIAL LOCATED BELOW THE CLAY GRADE WILL BE REMOVED AND REPLACED WITH GRANULAR CL II MATERIAL AS DIRECTED BY THE ENGINEER IN THE FIELD AND PAID FOR AS SUBGRADE UNDERCUTTING, TYPE II.

ALL FILL FOR THIS PROJECT MUST BE OBTAINED AND FURNISHED BY THE CONTRACTOR. ALL REQUIRED FILL WILL BE SELECTED EXCAVATED MATERIAL FROM THE SITE APPROVED BY THE ENGINEER, OR MDOT CLASS II GRANULAR MATERIAL FROM BORROW. EXCESS FILL SHALL BE REMOVED FROM SITE BY THE CONTRACTOR. NO BORROW OR SOIL REMOVAL ARRANGEMENTS HAVE BEEN PREARRANGED FOR THIS PROJECT AND SHALL BE THE TOTAL RESPONSIBILITY OF THE CONTRACTOR.

SEE PLAN AND PROFILE SHEETS FOR SOIL BORING DATA.

DRIVE REPLACEMENT WILL BE AS SHOWN ON THE PLANS OR AS DIRECTED BY THE ENGINEER IN THE FIELD.

AS PART OF THIS PROJECT THE CONTRACTOR WILL COORDINATE WITH THE ALLEGAN COUNTY ROAD COMMISSION TO PRESERVE AND RESET ALL GOVERNMENT CORNERS WITHIN THE PROJECT LIMITS.

CONTRACTOR WILL RELOCATE ALL MAILBOXES TO A TEMPORARY CENTRAL LOCATION APPROVED BY THE POSTAL SERVICE PRIOR TO CONSTRUCTION. CONTRACTOR SHALL INSTALL A 1" x 3" STAKE WITH THE RESPECTIVE PROPERTY ADDRESS WRITTEN ON IT IN THE FRONT YARD OF EACH RESIDENCE TO ASSIST WITH IDENTIFICATION FOR EMERGENCY VEHICLES. PAYMENT FOR RELOCATION WILL BE INCLUDED IN THE ITEM OF PROJECT CLEANUP. AT THE COMPLETION OF THE PROJECT SAID MAILBOXES SHALL BE RESET AT THEIR APPROPRIATE LOCATIONS.

ALL DISTURBED AREAS NOT TO BE PAVED WILL BE RESTORED WITH TOPSOIL SURFACE, SALV. LM (3 INCHES), MDOT SEED MIXTURE TUF (220#/ACRE); FERTILIZER, CHEMICAL NUTRIENT, CL A (176#/ACRE); AND MULCH AND MULCH ANCHORING (2 TON/ACRE). TO BE PAID AS RESTORATION (LUMP SUM).

ADEQUATE DUST CONTROL MEASURES WILL BE MAINTAINED BY THE CONTRACTOR AS DIRECTED BY THE ENGINEER IN THE FIELD, TO BE INCLUDED IN THE VARIOUS ITEMS OF WORK.

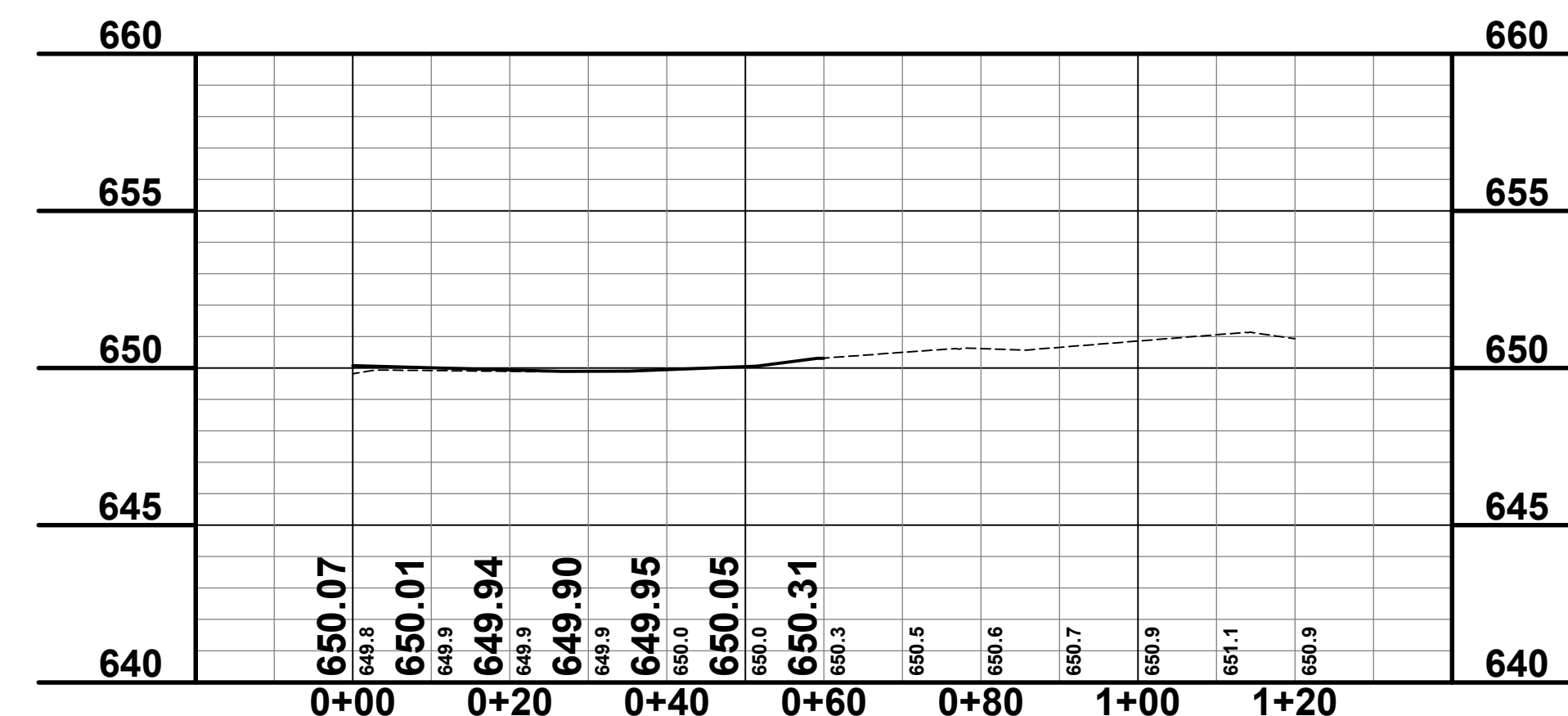
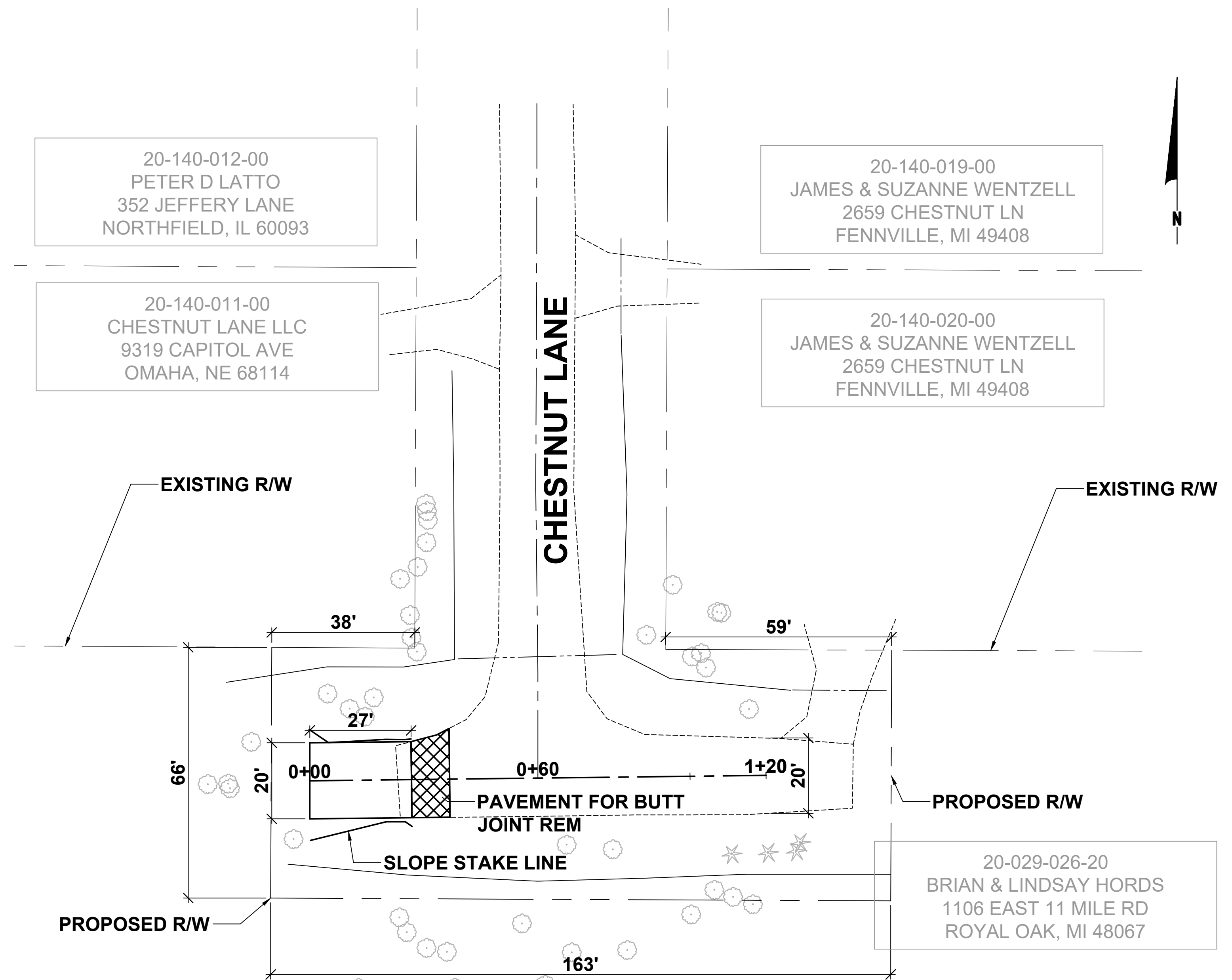
MULCH BLANKET, HIGH VELOCITY WILL BE PLACED ON THE BOTTOM OF ALL DITCHES WHEN THE LONGITUDINAL GRADE IS GREATER THAN OR EQUAL TO 2.00% UNLESS OTHERWISE NOTED, OR AS DIRECTED BY THE ENGINEER IN THE FIELD.

WHEN FIELD DRAIN TILES ARE ENCOUNTERED IN THE EXISTING DITCHES, THE CONTRACTOR WILL EXTEND THEM AS REQUIRED WITH UNDERDRAIN, SUBGRADE 4" OR 6" AND ADJUST THE DITCH GRADES AS NECESSARY TO PROVIDE POSITIVE DRAINAGE AS DIRECTED BY THE ENGINEER IN THE FIELD. THE COST OF THE CONNECTION SHALL BE INCLUDED IN THE NEW PIPE ITEM. IF THE ENGINEER DETERMINES THAT AN EXISTING TILE IS TOO LONG THE CONTRACTOR SHALL REMOVE THE TILE AS NECESSARY, TO BE INCLUDED IN THE ITEM OF STATION GRADING.

THE CONTRACTOR IS RESPONSIBLE FOR MAINTAINING EXISTING DRAINAGE PATTERNS, AND WILL RESOLVE ANY DRAINAGE PROBLEMS ON ADJACENT PROPERTIES WHICH MAY RESULT FROM THE CONTRACTOR'S ACTIVITIES.

DATUM REFERS TO NAVD83 DATUM.

DIMENSIONS TAKE PRECEDENCE OVER SCALE. CONTRACTOR TO VERIFY ALL DIMENSIONS IN FIELD.



PROPOSED PROFILE

**Board of County Road Commissioners
Of Allegan County**
1308 LINCOLN ROAD
ALLEGAN, MICHIGAN 49010-9762
www.alleganroads.org
TELEPHONE (269) 673-2184 FAX (269) 673-5922

REVISIONS	
1	
2	
3	
4	
5	
6	
7	

CHESTNUT LANE HAMMERHEAD
SAUGATUCK TOWNSHIP
PLAN & PROFILE - STA. 0+00 TO STA. 1+20

DRAWN BY: RPB
REVIEWED BY:
DATE: JUNE 2018
SCALE: 1" = 20'H, 5'V