

ADDENDUM NO. 1

ALLEGAN COUNTY ROAD COMMISSION

LH 400123 – 104TH AVENUE RECONSTRUCTION

MAY 25, 2023

Addendum No. 1 to the Plans and Specifications for the 104th Avenue Reconstruction project for Casco Township, as prepared by the Allegan County Road Commission for the May 31, 2023, bid letting. The purpose of this addendum is to revise the following:

Plan & Profile sheets 3-5 incorrectly displayed the proposed elevations along the bottom of the pages. These have been updated to display the correct proposed elevations and have been included as part of this addendum to the project. This labeling error has no effect on the total earthwork numbers for the project.

The Contractor hereby acknowledges receipt of this Addendum No. 1 and shall include a signed copy with his bid.

Contractor: _____

Signature: _____

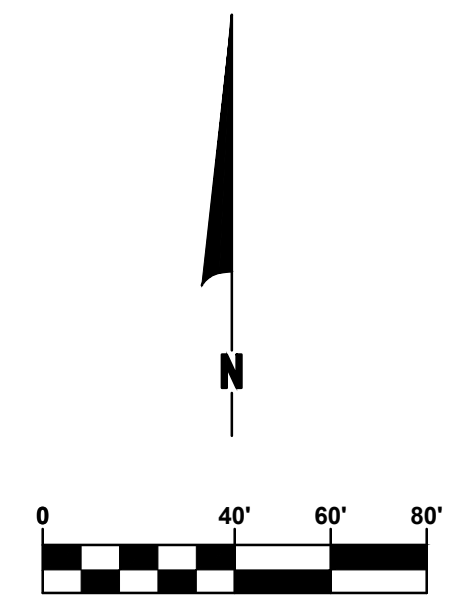
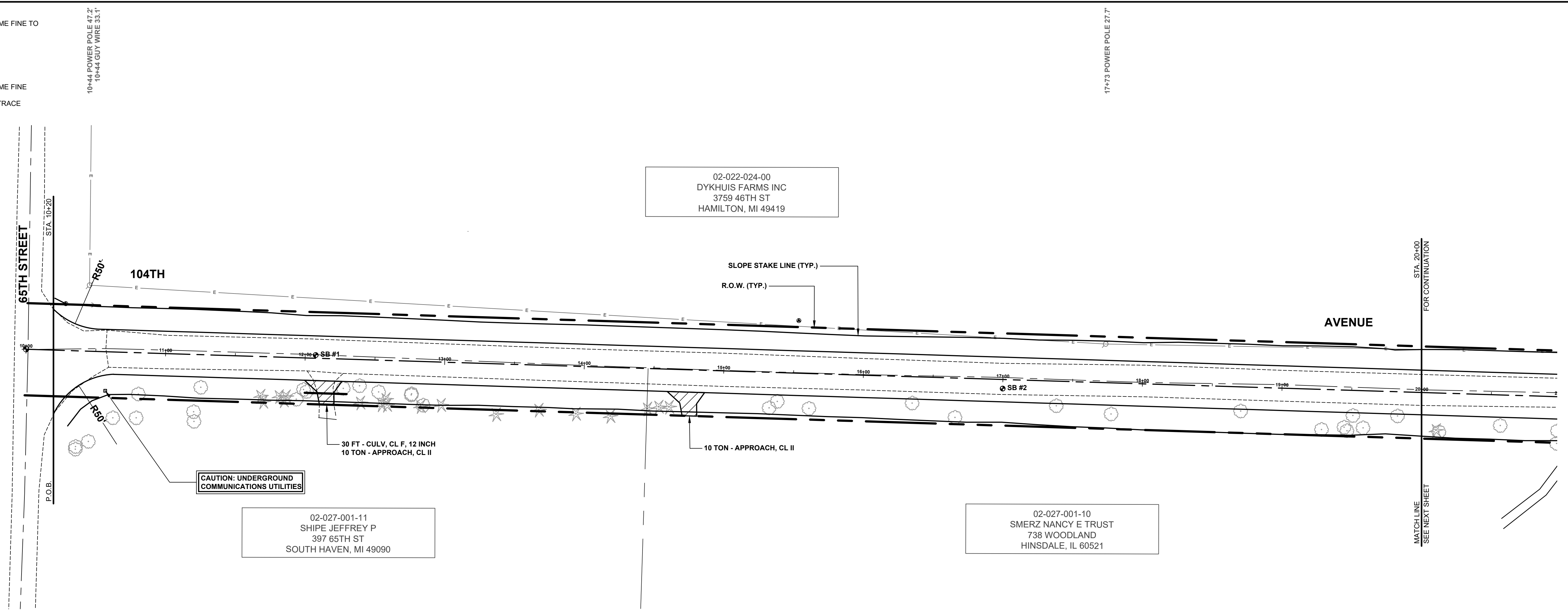
Printed Name: _____

Title: _____

Date: _____

SOIL BORINGS

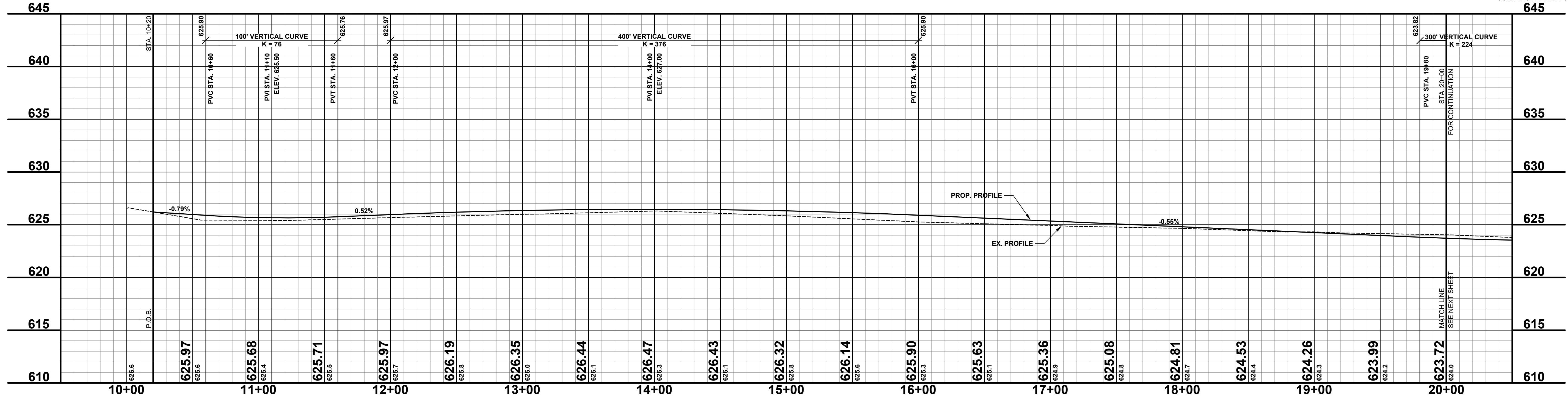
SB #1	0 - 3.5'	BROWN MEDIUM SAND, SOME FINE TO COARSE GRAVEL
	3.5' - 30"	DARK BROWN FINE SAND
	30" - 60"	BROWN SILTY FINE SAND
	60"	END OF BORING
SB #2	0 - 5'	BROWN MEDIUM SAND, SOME FINE TO COARSE GRAVEL
	5' - 15'	DARK BROWN FINE SAND, TRACE TOPSOIL
	15' - 36"	BROWN FINE SAND
	36" - 60"	LIGHT BROWN FINE SAND
	60"	END OF BORING



- 10+37 2 1/2" TREE 70.5'
- 10+47 7" TREE 64.6'
- 10+48 TELE RISER BOX 26.0'
- 10+44 30" TREE 47.2'
- 10+50 24" TREE 46.7'
- 10+51 ORN TREE 26.6' - REMOVE
- 11+21 ORN TREE 41.0'
- 11+22 3 1/2" TREE 31.1'
- 11+26 12" TREE 23.4' - REMOVE
- 11+69 PN 28.1' - REMOVE
- 11+71 PN 32.2' - REMOVE
- 11+82 PN 27.9' - REMOVE
- 11+87 PN 27.9' - REMOVE
- 11+89 PN 27.9' - REMOVE
- 11+85 ORN TREE 28.9' - REMOVE
- 11+89 12" TREE 22.7' - REMOVE
- 11+91 12" TREE 22.7' - REMOVE
- 12+11 FN GATE 42.5'
- 12+24 FENCE 43.4'
- 12+28 27" TREE 21.0' - REMOVE
- 12+46 5" TREE 19.7' - REMOVE
- 12+40 PN 30.9' - REMOVE
- 12+53 6" TREE 22.7' - REMOVE
- 12+56 PN 31.5' - REMOVE
- 12+59 PN 27.7' - REMOVE
- 12+61 6" TREE 22.7' - REMOVE
- 12+77 6" TREE 22.4' - REMOVE
- 12+84 PN 31.9' - REMOVE
- 12+88 PN 30.6' - REMOVE
- 13+38 12" PINE 36.0'
- 13+68 12" PINE 31.9' - REMOVE
- 13+85 12" PINE 33.9'
- 14+20 12" PINE 34.8'
- 14+46 12" PINE 28.7' - REMOVE
- 14+54 9" PINE 27.0' - REMOVE
- 14+62 6" PINE 26.9' - REMOVE
- 15+33 9" TREE 26.5' - REMOVE
- 15+38 6" TREE 20.7' - REMOVE
- 15+62 9" TREE 26.0' - REMOVE
- 16+35 6" TREE 16.9' - REMOVE
- 16+66 9" TREE 28.2' - REMOVE
- 17+39 18" TREE 17.6' - REMOVE
- 17+78 12" TREE 22.3' - REMOVE
- 18+71 6" TREE 17.3' - REMOVE
- 19+29 15" TREE 28.6' - REMOVE
- 19+45 6" TREE 26.6' - REMOVE
- 19+47 15" TREE 29.1' - REMOVE
- 19+51 6" TREE 16.0' - REMOVE
- 19+59 6" TREE 26.6' - REMOVE
- 19+83 12" TREE 17.4' - REMOVE

LEGEND

	REGRADE EXISTING DRIVE AS REQUIRED AND SURFACE WITH APPROACH, CLASS II TO A DEPTH OF 6" AS DIRECTED BY THE ENGINEER IN THE FIELD, PAID FOR AS APPROACH, CL II BY THE TON.
	SAWCUT AND REMOVE EXISTING HMA PAVEMENT, REGRADE EXISTING DRIVE OR APPROACH AS REQUIRED AND SURFACE WITH APPROACH, CL II; 165#/SYD HMA, 4EL (LEVELING); AND 165#/SYD HMA, 4EL (TOP) (PAVING UNDER SEPARATE CONTRACT IN THE FUTURE)
	SAWCUT AND REMOVE EXISTING CONCRETE PAVEMENT, REGRADE EXISTING DRIVE AS REQUIRED AND SURFACE WITH APPROACH, CL II; 165#/SYD HMA, 4EL (LEVELING); AND 165#/SYD HMA, 4EL (TOP) (PAVING UNDER SEPARATE CONTRACT IN THE FUTURE)



**Board of County Road Commissioners
Of Allegan County**

1308 LINCOLN ROAD
ALLEGAN, MICHIGAN 49010-9762
TELEPHONE (269) 673-2184 www.alleganroads.org FAX (269) 673-5922

REVISIONS	NO.	DESCRIPTION
1		
2		
3		
4		
5		
6		
7		

104TH AVENUE RECONSTRUCTION PROJECT
CASCO TOWNSHIP - 65TH STREET TO 62ND STREET

PLAN & PROFILE - STA. P.O.B. TO STA. 20+00

DRAWN BY: ACW
REVIEWED BY: RK
DATE: MAY 2023
SCALE: 1" = 40'H, 5'V

LH 400123 3

SOIL BORINGS

SB #3	0 - 10" BROWN MEDIUM SAND, SOME FINE TO COARSE GRAVEL
	10" - 42" DARK BROWN FINE TO MEDIUM SAND, TRACE FINE GRAVEL
	42" - 78" LIGHT BROWN FINE SAND
	78" - 120" BROWN FINE TO MEDIUM SAND
	120" END OF BORING
SB #4	0 - 5" BROWN MEDIUM SAND, SOME FINE TO COARSE GRAVEL
	5" - 18" DARK BROWN FINE SAND, TRACE TOPSOIL & TRACE CLAY
	18" - 28" BROWN SILTY CLAYEY FINE SAND
	28" - 78" BROWN FINE SAND
	78" - 120" BROWN FINE TO MEDIUM SAND, SOME FINE GRAVEL
	120" END OF BORING

REMOVE - 21+71.30' CMP 22.8'
21+72 M.6" PVC TILE OUTLET 31.4'
21+73 M.6" PVC TILE OUTLET 30.7'

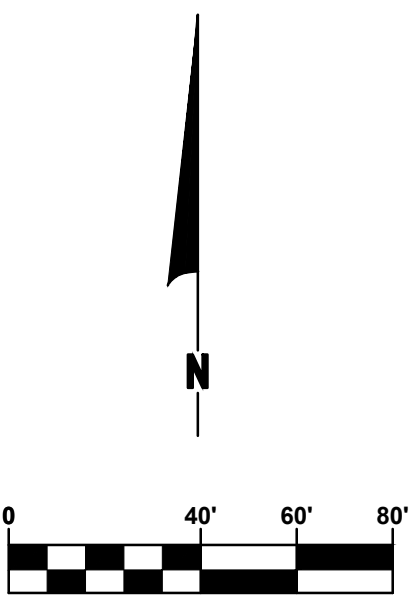
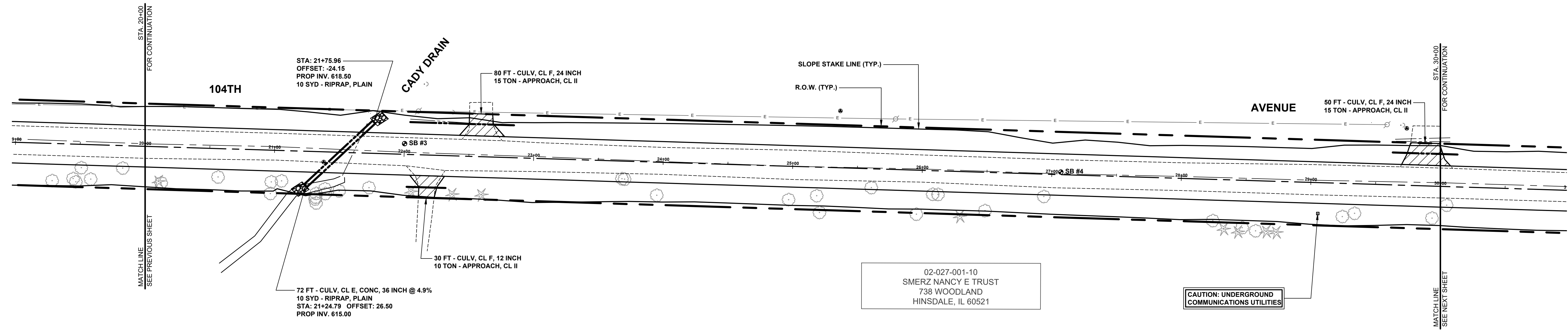
REMOVE - 22+06.94' CPP 27.3'
22+07.25' GUY WIRE 54.6'
22+14 GUY WIRE 54.6'
22-35 GUY WIRE 33.6'

REMOVE - 22+82.24' CPP 24.5'

02-022-024-00
DYKHUIS FARMS INC
3759 46TH ST
HAMILTON, MI 49419

02-027-001-10
SMERZ NANCY E TRUST
738 WOODLAND
HINSDALE, IL 60521

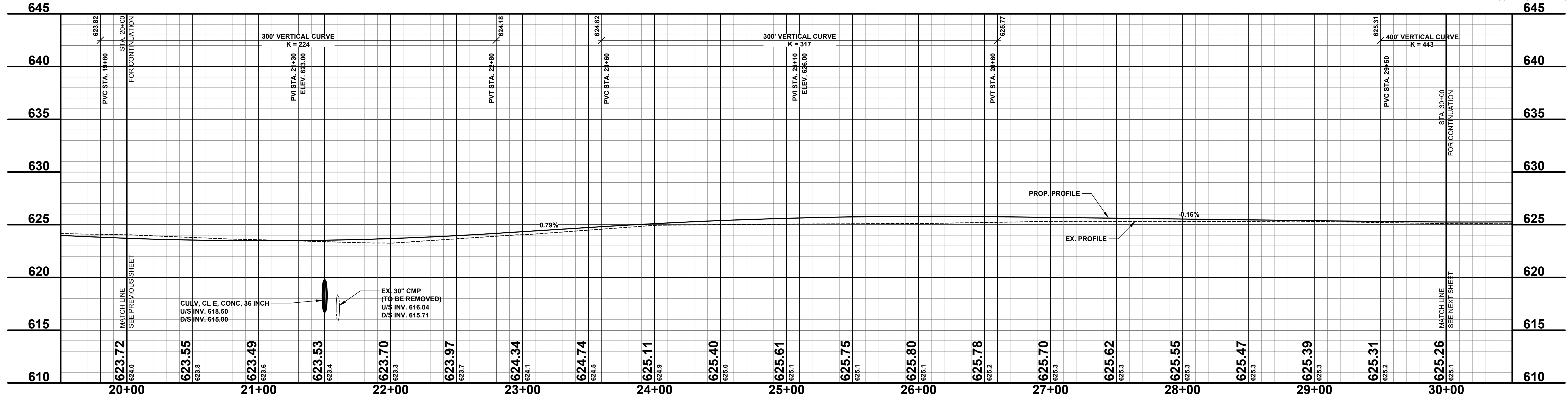
CAUTION: UNDERGROUND COMMUNICATIONS UTILITIES



- 20+11 6" PINE 26.6' - REMOVE
- 20+13 9" TREE 27.9' - REMOVE
- 20+57 9" TREE 22.0' - REMOVE
- 20+58 6" TREE 34.5'
- 20+58 15" CHERRY 24.5' - REMOVE
- 21+06 15" MAPLE 23.4' - REMOVE
- 21+32 15" CHERRY 36.7'
- 21+33 9" CHERRY 36.2'
- 21+33 18" MAPLE 39.7'
- 21+40 21" MAPLE 28.5' - REMOVE
- 21+40 9" MAPLE 32.2' - REMOVE
- 21+53 30" COMP 17.7' - REMOVE
- 21+74 15" TREE 26.6' - REMOVE
- 22+06 9" PINE 28.5' - REMOVE
- 22+38 6" PINE 29.6' - REMOVE
- 22+60 6" PINE 29.2' - REMOVE
- 23+69 6" TRI 13.6' - REMOVE
- 23+71 6" TRI 13.9' - REMOVE
- 23+96 6" TREE 26.6' - REMOVE
- 24+98 6" TW 25.8' - REMOVE
- 25+19 6" TREE 22.1' - REMOVE
- 25+22 18" TREE 35.0'
- 25+61 12" TREE 14.6' - REMOVE
- 26+96 12" TREE 34.0'
- 26+09 6" TREE 16.2' - REMOVE
- 26+13 6" TREE 16.2' - REMOVE
- 26+30 18" PINE 34.4'
- 26+49 15" DEAD TREE 29.6' - REMOVE
- 26+94 12" TREE 17.3' - REMOVE
- 28+25 21" TREE 31.9' - REMOVE
- 28+54 9" PINE 37.9'
- 28+45 12" PINE 39.7'
- 28+48 9" TREE 36.6'
- 28+69 9" TREE 38.7'
- 28+67 6" PINE 38.8'
- 28+74 6" PINE 39.2'
- 29+06 TELE RISER BOX 23.8' - RELOCATE (BY OTHERS)
- 29+25 6" TREE 26.6' - REMOVE
- 29+34 6" TREE 22.9' - REMOVE
- 29+94 6" TREE 24.7' - REMOVE

LEGEND

	REGRADE EXISTING DRIVE AS REQUIRED AND SURFACE WITH APPROACH, CLASS II TO A DEPTH OF 6". AS DIRECTED BY THE ENGINEER IN THE FIELD, PAID FOR AS APPROACH, CL II BY THE TON.
	SAWCUT AND REMOVE EXISTING HMA PAVEMENT. REGRADE EXISTING DRIVE OR APPROACH AS REQUIRED AND SURFACE WITH APPROACH, CL II; 165#/SYD HMA, 4EL (LEVELING); AND 165#/SYD HMA, 4EL (TOP) - (PAVING UNDER SEPARATE CONTRACT IN THE FUTURE)
	SAWCUT AND REMOVE EXISTING CONCRETE PAVEMENT. REGRADE EXISTING DRIVE AS REQUIRED AND SURFACE WITH APPROACH, CL II; 165#/SYD HMA, 4EL (LEVELING); AND 165#/SYD HMA, 4EL (TOP); (PAVING UNDER SEPARATE CONTRACT IN THE FUTURE)



**Board of County Road Commissioners
Of Allegan County**

1308 LINCOLN ROAD
ALLEGAN, MICHIGAN 49010-9762
www.alleganroads.org
TELEPHONE (269) 673-2184 FAX (269) 673-5922

REVISIONS

1	
2	
3	
4	
5	
6	
7	

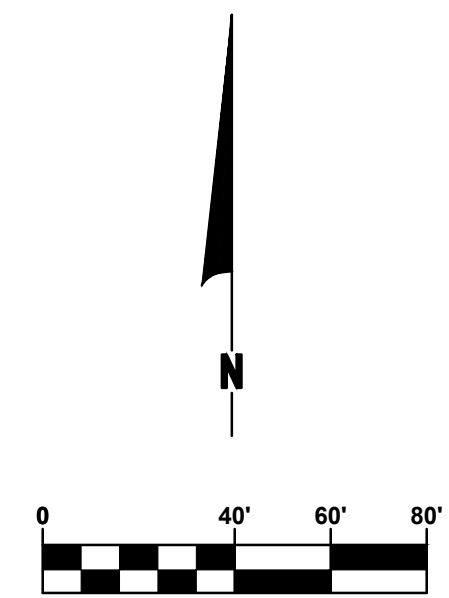
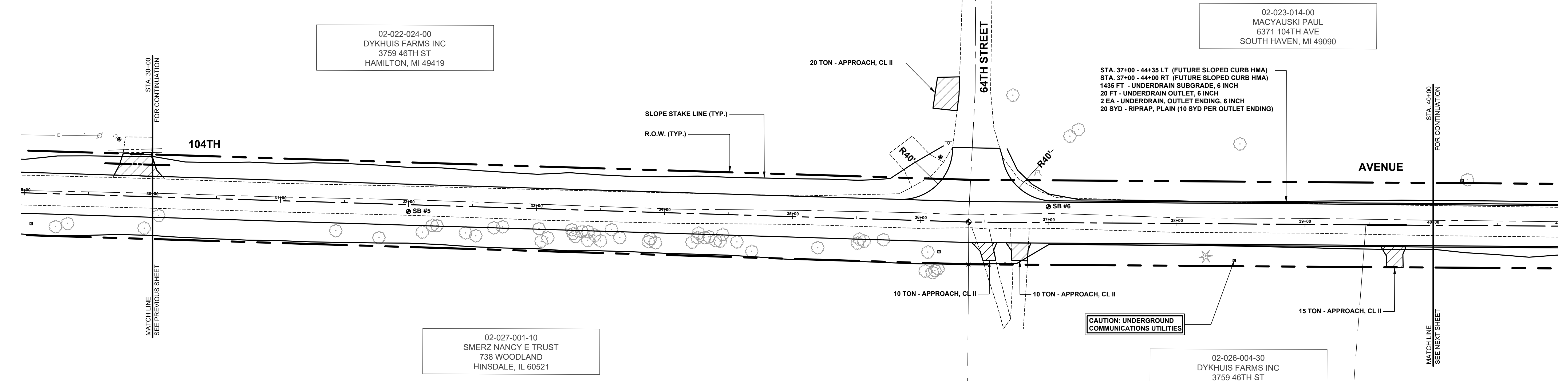
104TH AVENUE RECONSTRUCTION PROJECT
CASCO TOWNSHIP - 65TH STREET TO 62ND STREET

PLAN & PROFILE - STA. 20+00 TO STA. 30+00

DRAWN BY: ACW
REVIEWED BY: RK
DATE: MAY 2023
SCALE: 1"= 40'H, 5'V

SOIL BORINGS

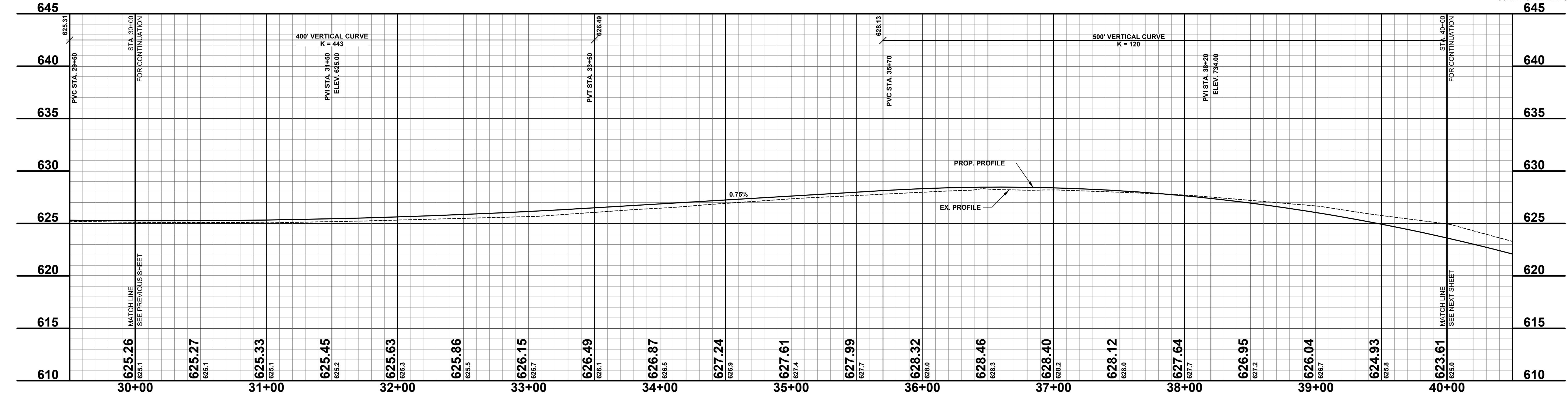
SB #5	0 - 7"	BROWN MEDIUM SAND, SOME FINE TO COARSE GRAVEL	REMOVE - 30+06 18" CPP 37.7'
	7" - 22"	DARK BROWN TO BLACK CLAYEY FINE SAND, TRACE TOPSOIL	REMOVE - 30+06 18" CPP 34.6'
	22" - 60"	BROWN FINE SAND	
	60"	END OF BORING	
SB #6	0 - 5"	BROWN MEDIUM SAND, SOME FINE TO COARSE GRAVEL	
	5" - 21"	DARK BROWN CLAYEY FINE SAND, TRACE TOPSOIL	
	21" - 84"	BROWN SILTY, CLAYEY FINE SAND	
	84" - 120"	BROWN SILTY FINE SAND	
	120"	END OF BORING	



- 30+06 15" TW 14.4' - REMOVE
- 31+44 15" TRI 22.1' - REMOVE
- 31+78 8" TW 26.4' - REMOVE
- 32+14 6" TW 21.1' - REMOVE
- 32+49 15" COTTONWOOD 15.6' - REMOVE
- 32+23 12" COTTONWOOD 15.7' - REMOVE
- 32+45 6" CHERRY 20.6' - REMOVE
- 32+43 15" OAK 22.7' - REMOVE
- 32+74 9" COTTONWOOD 16.0' - REMOVE
- 32+74 9" COTTONWOOD 15.0' - REMOVE
- 33+09 12" SASSAFRAS 22.6' - REMOVE
- 33+09 12" SASSAFRAS 22.6' - REMOVE
- 33+28 6" TREE 16.5' - REMOVE
- 33+31 15" SASSAFRAS 20.7' - REMOVE
- 33+31 15" SASSAFRAS 20.7' - REMOVE
- 33+36 15" SASSAFRAS 16.6' - REMOVE
- 33+41 15" SASSAFRAS 23.5' - REMOVE
- 33+46 9" SASSAFRAS 19.3' - REMOVE
- 33+51 9" SASSAFRAS 23.6' - REMOVE
- 33+56 12" TW 20.9' - REMOVE
- 33+68 12" SASSAFRAS 23.1' - REMOVE
- 33+84 12" SASSAFRAS 23.7' - REMOVE
- 33+84 12" SASSAFRAS 23.7' - REMOVE
- 34+22 9" SASSAFRAS 22.4' - REMOVE
- 34+26 9" SASSAFRAS 18.6' - REMOVE
- 34+27 9" SASSAFRAS 18.2' - REMOVE
- 34+35 9" SASSAFRAS 17.5' - REMOVE
- 34+40 9" SASSAFRAS 20.6' - REMOVE
- 34+46 9" SASSAFRAS 15.6' - REMOVE
- 34+57 15" OAK 21.1' - REMOVE
- 34+59 15" TW 28.1' - REMOVE
- 35+20 12" CHERRY 23.7' - REMOVE
- 35+51 9" SASSAFRAS 19.1' - REMOVE
- 35+53 15" TW 16.0' - REMOVE
- 35+56 9" SASSAFRAS 17.5' - REMOVE
- 35+71 6" MAPLE 15.9' - REMOVE
- 36+05 15" CHERRY 33.3'
- 36+06 9" MAPLE 24.5' - REMOVE
- 36+10 9" SASSAFRAS 40.3'
- 36+15 9" SASSAFRAS 37.2'
- 36+15 9" SASSAFRAS 37.2'
- 36+15 TELE RISER BOX 23.8' - RELOCATE (BY OTHERS)
- 36+38 FND 1/2" IRON BENT 33.2'
- 36+65 WELL 32.9'
- 38+22 9" PINE 25.3' - REMOVE
- 38+45 TELE RISER BOX 28.6'

LEGEND

	REGRADE EXISTING DRIVE AS REQUIRED AND SURFACE WITH APPROACH, CLASS II TO A DEPTH OF 6" AS DIRECTED BY THE ENGINEER IN THE FIELD, PAID FOR AS APPROACH, CL II BY THE TON.
	SAWCUT AND REMOVE EXISTING HMA PAVEMENT, REGRADE EXISTING DRIVE OR APPROACH AS REQUIRED AND SURFACE WITH APPROACH, CL II; 165#/SYD HMA, 4EL (LEVELING); AND 165#/SYD HMA, 4EL (TOP) (PAVING UNDER SEPARATE CONTRACT IN THE FUTURE)
	SAWCUT AND REMOVE EXISTING CONCRETE PAVEMENT, REGRADE EXISTING DRIVE AS REQUIRED AND SURFACE WITH APPROACH, CL II; 165#/SYD HMA, 4EL (LEVELING); AND 165#/SYD HMA, 4EL (TOP) (PAVING UNDER SEPARATE CONTRACT IN THE FUTURE)



Board of County Road Commissioners
Of Allegan County
 1308 LINCOLN ROAD
 ALLEGAN, MICHIGAN 49010-9762
 TELEPHONE (269) 673-2184 www.alleganroads.org FAX (269) 673-5922

104TH AVENUE RECONSTRUCTION PROJECT
 CASCO TOWNSHIP - 65TH STREET TO 62ND STREET
 PLAN & PROFILE - STA. 30+00 TO STA. 40+00

REVISIONS

1	
2	
3	
4	
5	
6	
7	

DRAWN BY: ACW
 REVIEWED BY: RK
 DATE: MAY 2023
 SCALE: 1"= 40'H, 5V

LH 400123 5